

**REQUEST FOR QUALIFICATIONS (RFQ) FOR PHASE III ENGINEERING SERVICES  
N. STATE STREET RESURFACING**

**VILLAGE OF HAMPSHIRE, IL  
DATE PUBLISHED: JANUARY 21, 2025**

The Village of Hampshire is seeking a qualified Consulting Engineering Firm to perform construction engineering services for the Village's N. State Street Resurfacing project.

The Consulting Engineer shall perform and carry out, in a professional and satisfactory manner, the necessary services to complete the requirements included in this project. Currently, the Village anticipates construction for this work starting in August of 2025 and construction being completed by the end of September.

The services to be provided are described in the Minimum Scope of Services section of this proposal. All work must adhere to Village of Hampshire and Illinois Department of Transportation (IDOT) standards as required. In addition, this project will be funded using Federal Surface Transportation Program (STP) funding; therefore, all construction and construction engineering must meet Federal and IDOT standards.

This project includes the milling and resurfacing of FAU 0098 (N. State Street) from Hampshire Creek to Allen Road. The total length of this project is 1,864 feet (0.353 miles). Other improvements include pavement patching, combination concrete curb and gutter removal and replacement, structure adjustments, pavement markings and all other appurtenant work required to complete the project.

**FUNDING:**

The Phase III portion of this project is funded by Federal and local sources. The selection of the consultant will follow the Qualifications Based Selection (QBS) process in accordance with Section 5-5 of the Bureau of Local Roads and Streets (BLRS) Manual.

**MINIMUM SCOPE OF SERVICES**

The consultant shall provide the resident engineer, inspectors, professional testing services and other technical personnel necessary to review, observe, monitor and document the contractor's progress on the project from the start of field operations to the final completion. All work is to be performed according to the general industry engineering standards established by IDOT.

The consultant and sub-consultants are expected to complete construction inspection services in accordance with, but not limited to, the following general tasks:

Preconstruction Tasks

1. Attend an IDOT preconstruction meeting with all interested parties to discuss goals, objectives, and issues.



2. Conduct a local preconstruction meeting with all interested parties to discuss goals, objectives, and issues that the Village may have. Meeting minutes shall be submitted to the Village for review and approval.
3. Review the plans and specifications in depth, verifying quantities, elevations, and dimensions relevant to the project. Also, anticipate any potential conflicts or issues and develop solutions prior to construction.
4. Review the contractor's proposed construction schedule for compliance with the contract. Submittals should be included on this schedule, as well as all major subcontractors.
5. Set up field books, quantity books, diary, job box and all other forms of proper project documentation, including CMMS.
6. Prepare a project contact list with names, addresses, phone numbers and fax numbers for all contractors, subcontractors and suppliers for the project. Also, submit 24-hour contact numbers for all applicable parties.

### Construction Tasks

1. Provide a resident engineer for required daily activities, such as: observing the progress and quality of work and determining if the work is proceeding in accordance with the contract documents. Maintain a site presence at all times when the contractor is working. Disapprove any work failing to conform to the contract documents and immediately inform Village and IDOT representatives. Verify that there are no deviations from the contract documents unless authorized by Village and IDOT representatives.
2. Keep inspector's daily reports and quantity book records up to date. Also maintain project diary noting all necessary observations. Advise if the contractor is falling behind schedule. Submit weekly reports from CMMS to IDOT and the Village.
3. Maintain orderly files of all relevant project documents so that they can be easily accessed.
4. Perform quantity measurements to prepare pay estimates and change orders to review with contractor and submit to Village for review and submittal to IDOT.
5. Provide liaison functions related to the coordination of contractors, utilities, developers, other agencies and property owners engaged or affected by the project.
6. Check and approve project submittals for compliance with standards. Forward recommendations to the Village and IDOT representatives.
7. Maintain daily contact with contractor to monitor schedule and recommend actions that should be taken if falling behind.
8. Maintain daily contact with the Village and IDOT representatives to inform on all relevant project information.
9. Inspect, document and inform the contractor and the Village of the adequacy of the establishment and maintenance of traffic control. Perform all necessary traffic control checks. Document all deficiencies and contractor responses to notices of the same. Inform the Village and IDOT of deficiencies and if the contractor does not correct or enforce as contract stipulates.
10. Provide construction layout as needed.
11. Provide Quality Assurance (QA) services in accordance with IDOT QC/QA practices and procedures (contractor will provide QC). Provide necessary coordination and qualified personnel to perform work for all materials. Obtain and test soil, asphalt, concrete and



aggregate samples to perform necessary testing to fulfill QA/geotechnical requirements. Reports shall be prepared in a timely manner and coordinated with QC data. The consultant shall fulfill the requirements as the QA manager.

12. Prepare minutes for all meetings and distribute to appropriate parties.
13. Maintain a set of working drawings as construction is progressing.
14. Provide all necessary equipment, instruments, supplies, transportation and personnel required to perform duties of the project team.
15. Maintain and periodically transmit to contractor a running punch list to expedite project close out.
16. Obtain material acceptance certifications as materials are incorporated into the project to expedite project closeout. Withhold payment until material inspection and certifications are provided.
17. Provide the Village with regular invoicing and provide supporting documentation as requested in order for the Village to submit for reimbursement in accordance with Section 5-10 of the Bureau of Local Roads and Streets Manual.

#### Post Construction Tasks

1. Perform final inspection with the Village, the IDOT representative, contractor and all applicable utilities to finalize punch list. Document the items in the final punch list and submit them to the contractor for close out. Verify completion of all work and provide a recommendation to the Village.
2. Complete a contractor performance evaluation and conduct a post construction meeting with all interested parties to discuss lessons learned and identify steps to eliminate problems in the future.
3. Verify that all documentation is accomplished and that all material inspections and certifications have been accounted for and are complete.
4. Provide all documentation associated with the final balancing change order and final pay estimate.
5. Complete job box and conduct all audit(s) with IDOT. The job box will remain property of the Village.
6. Close out project with IDOT within a reasonable time frame after all construction is completed.

#### **SUBMITTAL REQUIREMENTS**

Please submit two (2) hard copies and one (1) digital copy of your firm's qualifications for services by 12:00 PM Friday, February 14, 2025. The digital copy should be in PDF format on a flash drive. Questions related to this RFQ should be submitted by email to Jay Hedges: [jhedges@hampshireil.org](mailto:jhedges@hampshireil.org). All questions must be received by 4:00 PM on Friday, February 7, 2025. The Village will provide the final response to all consultants by 4:00 PM on Tuesday, February 11, 2025.



The statement of qualifications (SOQ) should be mailed or hand delivered in a sealed envelope marked "**Village of Hampshire – N. State Street Resurfacing - Construction Engineering Services SOQ**" to Jay Hedges, Village Manager, 234 S. State Street Hampshire, IL 60140

All submittals must be thorough, complete and accurate. A table of contents and sectional tabs should be provided for all submittals.

Submittals shall include:

1. Firm Information

A title page that includes the following information: name of firm, local address, telephone number, fax number, name of contact person, location of branch offices, if any, and states in which your firm is licensed to practice. Additional general firm information can be provided but is limited to four pages (single sided).

2. IDOT Pre-Qualifications

As a prequalification of submittal, all prime consultants must be pre-qualified by IDOT and must submit documentation of their current prequalification status for the following:

- Highways – Roads and Streets
- Special Services – Construction Inspection

3. Sub-Consultants

List sub-consultants, if any, that will be used. Provide a copy of the firm's current prequalification status with IDOT.

4. Project Team

Provide biographical data and experience on key professional members of the firm(s) who could be directly involved with this particular project. Each resume should be limited to two pages (single sided). The key personnel should include the following:

- Project Manager who will be responsible for coordinating all activities. Must be a Licensed Professional Engineer in the State of Illinois with Phase III experience. Maximum one (1) person listed.
- Resident Engineer who will be responsible for overseeing all construction engineering activities (must be a Licensed Professional Engineer in the State of Illinois and have a current certificate for IDOT's "Documentation of Contract Quantities").



- Construction Engineer(s) who will be responsible for assisting the Resident Engineer and have a current certificate for IDOT's "Documentation of Contract Quantities".
- Any sub-consultants that will be part of the project team
- Any additional staff that will be involved in Federally funded projects. Maximum one (1) person listed.

#### 5. Similar Project Experience

Provide a minimum of three recent examples of projects within the last five years that were federally funded or similar in nature to this project. Include a description of each project, including location, client, and scope of professional services delivered by your firm and the project team that staffed the project (project manager, resident engineer, inspector(s), etc.), duration of the project, and project cost. Project experience is limited to three pages (single sided).

#### **CRITERIA FOR REVIEW:**

The selection criteria and weightings for project selection are indicated below:

1. Firm Experience (30%). The entity's general experience, stability and qualifications related to similar federally funded Phase III projects and locally funded projects of similar nature.
2. Staff Capabilities (30%). The education, experience and expertise of the entity's principals and key employees. Qualifications and experience of personnel to perform the required observation and inspection of project in accordance with general industry engineering standards established by IDOT.
3. Past Performance (30%). The entity's history of performance on projects similar to the one under consideration.
4. Local presence (10%). Knowledge of local community.

A selection committee comprised of staff from the Village will evaluate the SOQ's. The SOQ's will be reviewed, evaluated and scored, using the criteria and weights defined above. The selected consultant will be notified, and a final scope and hours will be negotiated. The engineering agreement will be Cost Plus Fixed Fee format using the BLR 05530 form. The selected consultant shall also submit draft BC 775 and BC 776 (if needed) forms for review with the draft BLR 05530.

The Village will begin reviewing the SOQ's on Tuesday, February 18, 2025. The Village intends to have negotiations completed and all of the draft forms (BLR 05530, BC 775, BC 776 (if needed)) submitted by Friday February 28, 2025.

The engineering agreement will not be presented to the Village Board until after the agreement is reviewed by IDOT. IDOT will review the engineering agreement to verify elements of the contract costs, acceptable indirect cost rate(s) for application to contracts and assuring consultant



compliance with the Federal cost principles. Approval of the engineering agreement is subject to IDOT review and eventual approval by the Village Board.



Legend

Project Limits



**Engineering Enterprises, Inc.**  
52 Wheeler Road  
Sugar Grove, Illinois 60554  
(630) 466-6700  
[www.eeiweb.com](http://www.eeiweb.com)

**Village of Hampshire**  
234 S. State Street - P.O. Box 457  
Hampshire, IL 60140-0457  
(847) 683-2181  
[www.hampshireil.org](http://www.hampshireil.org)

DATE:	FEBRUARY 2020
BY:	MJT
CHK:	
PATH:	H:\GIS\Public\Hampshire\2020\HA2000
FILE:	HA200 - French Rd & RT 72 (WM)

VILLAGE OF HAMPSHIRE, ILLINOIS

**ATTACHMENT E**  
**NORTH STATE STREET**  
**LOCATION MAP**

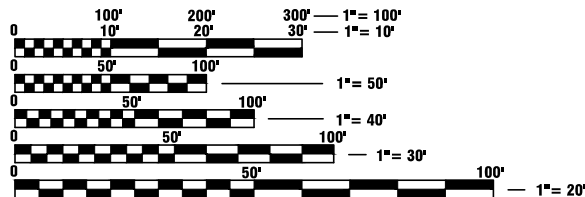




FEDERAL AID PROGRAM ENGINEER, CARMEN E. RAMOS P.E., SCHAUMBURG IL

FOR INDEX OF SHEETS, HIGHWAY  
STANDARDS, AND PR LEGEND  
SEE SHEET NO. 2

STATE STREET  
DESIGN DESIGNATION  
MAJOR COLLECTOR  
DESIGN SPEED = 45 M.P.H.  
POSTED SPEED = 40 M.P.H.  
ADT (2023) = 4000 VPD



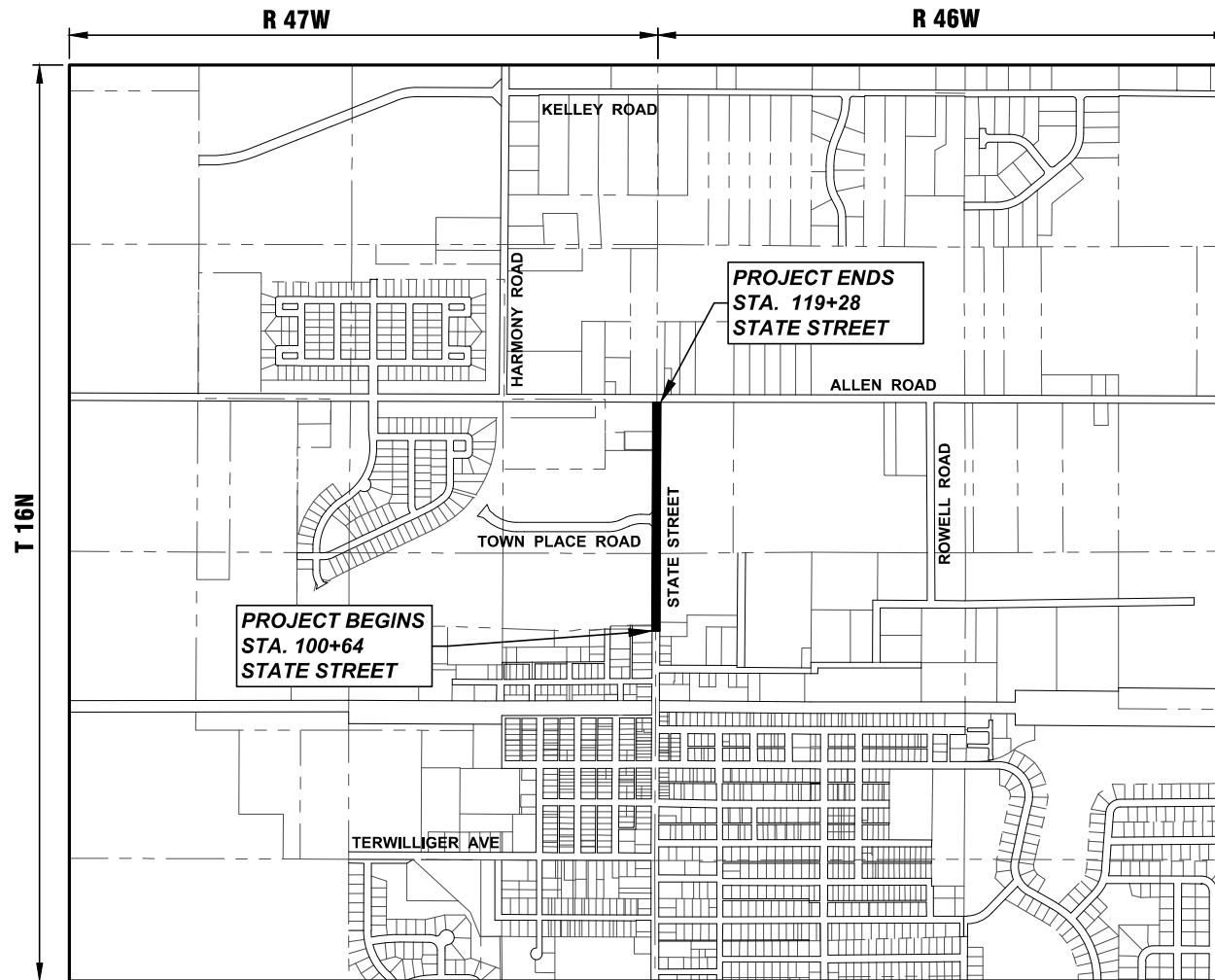
FULL SIZE PLANS HAVE BEEN PREPARED USING STANDARD  
ENGINEERING SCALES. REDUCED SIZED PLANS WILL NOT  
CONFORM TO STANDARD SCALES. IN MAKING MEASUREMENTS  
ON REDUCED PLANS, THE ABOVE SCALES MAY BE USED.



CONTRACT NO. XXXXX

STATE OF ILLINOIS  
DEPARTMENT OF TRANSPORTATION  
**PLANS FOR PROPOSED  
FEDERAL-AID HIGHWAY**

FAU 0098 (N. STATE STREET)  
HAMPSHIRE CREEK TO ALLEN ROAD  
ROADWAY RESURFACING  
SECTION 24-00022-00-RS  
PROJECT NUMBER: SLD7 (215)  
VILLAGE OF HAMPSHIRE  
KANE COUNTY  
JOB NO. C-91-275-24



LOCATION MAP (SCALE 1"=800')  
N 1/2 SECTION 21/22, T16N, R 46/47W, HAMPSHIRE TOWNSHIP  
GROSS LENGTH OF PROJECT = 1,864 FEET (0.353 MILES)  
NET LENGTH OF PROJECT = 1,864 FEET (0.353 MILES)

F.A.U. RTE.	SECTION	COUNTY	TOTAL SHEETS	SHEET NO.
0098	24-00022-00-RS	KANE	18	1
CONTRACT NO. XXXXX				



STATE OF ILLINOIS DEPARTMENT OF TRANSPORTATION	
APPROVED _____	VILLAGE OF HAMPSHIRE, VILLAGE MANAGER
PASSED _____	DISTRICT 1 ENGINEER OF LOCAL ROADS & STREETS
RELEASING FOR BID BASED ON LIMITED REVIEW _____	REGIONAL ENGINEER

DATE: _____	SEAL
CHRISTOPHER J. OTT	
LICENSE EXPIRES: NOVEMBER 30, 2025	
SHEETS: 1-18	

	Engineering Enterprises, Inc. CONSULTING ENGINEERS 52 Wheeler Road Sugar Grove, Illinois 60554 Phone: (630) 466-6700
--	--

PRINTED BY THE AUTHORITY  
OF THE STATE OF ILLINOIS



Plotted: December 17, 2024 @ 7:39 AM By: Kris Pung - Model Name: 02\_index - 22x34

FILE NAME = H:\SDSKPROJ\HA\_HAMPSHIRE\2024\HA2407\DWG\_FINAL\_ENG\HA2407-COVER

GENERAL NOTES

SPECIFICATIONS, STANDARDS, AND SPECIAL PROVISIONS

ALL CONSTRUCTION SHALL BE DONE IN ACCORDANCE WITH THE "STANDARD SPECIFICATIONS FOR ROAD AND BRIDGE CONSTRUCTION," ADOPTED JANUARY 1, 2022 (HEREINAFTER REFERRED TO AS THE STANDARD SPECIFICATIONS), THE "SUPPLEMENTAL SPECIFICATIONS AND RECURRING SPECIAL PROVISIONS," ADOPTED JANUARY 1, 2025, THE LATEST EDITION OF THE "ILLINOIS MANUAL ON UNIFORM TRAFFIC CONTROL DEVICES FOR STREETS AND HIGHWAYS", THE "STANDARD SPECIFICATIONS FOR WATER & SEWER MAIN CONSTRUCTION IN ILLINOIS", SEVENTH EDITION, THE CODES AND ORDINANCES OF THE VILLAGE OF HAMPSHIRE, ILLINOIS, THE DETAILS IN THE PLANS AND THE SPECIAL PROVISIONS INCLUDED IN THE CONTRACT DOCUMENTS.

NO SUBSTITUTIONS OR VARIANCES WILL BE PERMITTED TO ANY STANDARD NOTES OR ORDINANCES UNLESS APPROVED OTHERWISE IN WRITING PRIOR TO COMMENCING CONSTRUCTION ACTIVITY.

ALL TRAFFIC CONTROL AND OTHER ADVISORY SIGNS NEEDED FOR CONSTRUCTION ARE TO BE FURNISHED BY THE CONTRACTOR IN ACCORDANCE WITH ARTICLE 107.14 OF THE STANDARD SPECIFICATIONS.

THE CONTRACTOR SHALL AT ALL TIMES PROVIDE PROTECTION FOR TRAFFIC AS CALLED FOR IN THE APPLICATION OF TRAFFIC CONTROL DEVICES, THE STANDARD SPECIFICATIONS, THE SPECIAL PROVISIONS AND THE PLANS

UTILITIES

THE CONTRACTOR SHALL COOPERATE WITH THE OWNER IF ANY UTILITY IMPROVEMENTS ARE REQUIRED WITHIN THE DURATION OF THE CONTRACT.

THE CONTRACTOR SHALL BE RESPONSIBLE FOR CONTACTING THE OWNERS OF ALL UTILITIES PRIOR TO CONSTRUCTION TO DETERMINE THE LOCATION OF ALL EXISTING AND PROPOSED UTILITY EQUIPMENT. THE CONTRACTOR SHALL COOPERATE WITH ALL UTILITY OWNERS AS PROVIDED FOR IN THE STANDARD SPECIFICATIONS IF UTILITY RELOCATION, ADJUSTMENT, OR PROTECTION IS NECESSARY.

THE LOCATION OF EXISTING DRAINAGE STRUCTURES, STORM SEWERS, WATER MAINS, SANITARY SEWERS, FIELD TILES AND ANY OTHER PUBLIC OR PRIVATE UTILITIES AS SHOWN ON THE PLANS IS APPROXIMATE AND NOT NECESSARY COMPLETE: THEIR EXACT LOCATION IS TO BE DETERMINED IN THE FIELD BY THE CONTRACTOR.

BEFORE STARTING ANY EXCAVATION, THE CONTRACTOR SHALL CALL "JULIE"(JOINT UTILITY LOCATION INFORMATION FOR EXCAVATION) AT (800) 892-0123 FOR FIELD LOCATIONS OF BURIED UTILITIES (48 HOURS NOTIFICATION IS REQUIRED).

IF EXISTING UTILITY LINES OF ANY NATURE ARE ENCOUNTERED WHICH CONFLICT IN LOCATION WITH NEW CONSTRUCTION, THE CONTRACTOR SHALL NOTIFY THE ENGINEER SO THAT THE CONFLICT MAY BE RESOLVED.

UNDER NOT CIRCUMSTANCES SHALL THE CONTRACTOR OPERATE ANY VALVES OR HYDRANTS.

STAKING

THE CONTRACTOR SHALL PROTECT AND CAREFULLY PRESERVE ALL SECTION OR SUBSECTION MONUMENTS, PROPERTY CORNERS, AND REFERENCE MARKERS UNTIL THE OWNER, THE OWNER'S AGENT, OR AN AUTHORIZED SURVEYOR HAS WITNESSED OR OTHERWISE REFERENCED THEIR LOCATIONS.

ALL OFFSET LOCATIONS GIVEN ON THE DETAILED PLANS ARE FROM THE CENTERLINE AS SHOWN ON THE PLANS.

MISCELLANEOUS

THE THICKNESS OF ASPHALT MIXTURES SHOWN IN THE PLANS ARE NOMINAL. DEVIATIONS MAY OCCUR DUE TO IRREGULARITIES IN THE SURFACES OR BASES ON WHICH THE ASPHALT MIXTURES ARE TO BE PLACED.

IT IS THE CONTRACTOR'S RESPONSIBILITY TO ASCERTAIN EXISTING FIELD CONDITIONS BEFORE BIDDING ON THIS CONTRACT.

WHERE NEW WORK MEETS EXISTING FEATURES TO REMAIN, THE CONTRACTOR SHALL FIELD CHECK ALL DIMENSIONS AND ELEVATIONS BEFORE PROCEEDING WITH CONSTRUCTION. IMMEDIATELY NOTIFY THE ENGINEER OF ANY DISCREPANCIES.

THE CONTRACTOR WILL BE REQUIRED TO COMPLY WITH ALL STATE REGULATIONS REGARDING AIR, WATER AND NOISE POLLUTION. THE CONTRACTOR IS PROHIBITED FROM BURNING ANY MATERIAL WITHIN OR ADJACENT TO THE IMPROVEMENT.

THE ENGINEER IS NOT RESPONSIBLE FOR THE CONSTRUCTION MEANS, METHODS, TECHNIQUES, SEQUENCES OR PROCEDURES, TIME OF PERFORMANCE, PROGRAMS OR FOR ANY SAFETY PRECAUTIONS USED BY THE CONTRACTOR. THE CONTRACTOR IS SOLELY RESPONSIBLE FOR EXECUTION OF THEIR WORK IN ACCORDANCE WITH THE CONTRACT DOCUMENTS AND SPECIFICATIONS.

FOR STABILIZATION, ALL TYPE III BARRICADES WILL REQUIRE A MINIMUM OF FOUR SAND BAGS PER BARRICADE.

THE CONTRACTOR SHALL MAINTAIN EXISTING SIDE STREET AND DRIVEWAY ACCESS TO EACH ABUTTING PROPERTY AT ALL TIMES DURING CONSTRUCTION OF THE PROJECT UNLESS OTHERWISE NOTED ON THE PLANS OR DIRECTED BY THE ENGINEER.

THE CONTRACTOR SHALL DISPOSE OF AND REMOVE FROM THE SITE EACH DAY ALL CURB, GUTTER, AND PAVEMENT.

THE ROADWAY ELEVATION FROM STATION 100+64 TO STATION 119+28 SHALL NOT CHANGE.

THE STORAGE OF EQUIPMENT AND/OR MATERIALS WITHIN THE RIGHT-OF-WAY OF ANY STREET SHALL REQUIRE PRIOR APPROVAL OF THE ENGINEER.

COMBINATION CONCRETE CURB AND GUTTER REMOVAL AND REPLACEMENT AS SHOWN ON THE PLANS IS FOR INFORMATIONAL PURPOSES ONLY. ACTUAL LOCATIONS AND QUANTITIES ARE TO BE DETERMINED AND MARKED BY THE ENGINEER PRIOR TO CONSTRUCTION.

ALL EXISTING SIGNS (INCLUDING THOSE LOCATED ON UTILITY/LIGHT POLES) THAT DO NOT CONFLICT WITH THE IMPROVEMENTS SHALL REMAIN IN PLACE UNLESS DIRECTED BY THE ENGINEER.

CONTRACTOR SHALL TAKE PRECAUTION BY PRESERVING EXISTING TREES WITHIN THE RIGHT OF WAY. IF ANY DAMAGE OCCURS, TREES SHALL BE REPLACED IN KIND PER ARTICLE 201.07 REPAIR OR REPLACEMENT OF EXISTING PLANT MATERIAL REQUIREMENT STATED HEREIN.

IDOT HIGHWAY STANDARDS

000001-08	STANDARD SYMBOLS, ABBREVIATIONS, AND PATTERNS
280001-07	TEMPORARY EROSION CONTROL SYSTEMS
442201-03	CLASS C AND D PATCHES
604001-05	FRAME AND LIDS TYPE 1
604006-05	FRAME AND GRATE TYPE 3
606001-08	CONCRETE CURB TYPE B AND COMBINATION CONCRETE CURB AND GUTTER
701006-05	OFF-RD OPERATIONS, 2L, 2W, 15'(4.5M) TO 24" (600MM) FROM PAVEMENT EDGE
701011-04	OFF-RD MOVING OPERATIONS, 2L, 2W, DAY ONLY
701301-04	LANE CLOSURE, 2L, 2W, SHORT TIME OPERATIONS
701311-03	LANE CLOSURE, 2L, 2W, MOVING OPERATIONS - DAY ONLY
701501-06	URBAN LANE CLOSURE 2L, 2W, UNDIVIDED
701502-09	URBAN LANE CLOSURE 2L, 2W, WITH BIDIRECTIONAL LEFT TURN LANE
701901-10	TRAFFIC CONTROL DEVICES
780001-05	TYPICAL PAVEMENT MARKINGS
781001-04	TYPICAL APPLICATIONS RAISED REFLECTIVE PAVEMENT MARKERS

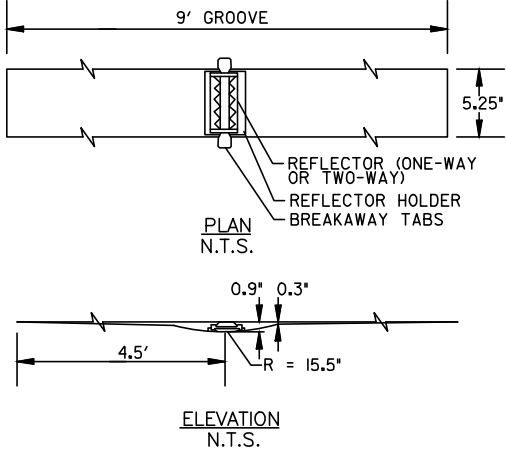
INDEX OF SHEETS

SHEET NO.	SHEET DESCRIPTION
1.	COVER SHEET
2.	INDEX OF SHEETS, DETAILS, HIGHWAY STANDARDS, AND GENERAL NOTES
3.-5.	SUMMARY OF QUANTITIES
6.	TYPICAL SECTIONS
7.-9	RESURFACING PLAN
10.-18.	IDOT DISTRICT 1 DETAILS

LEGEND

	HOT-MIX ASPHALT SURFACE REMOVAL, 3.75" AND RESURFACING
	HOT-MIX ASPHALT SURFACE REMOVAL, BUTT-JOINT
	COMB CONC C&G REMOVAL AND REPLACEMENT

SHEET. NO.	IDOT DISTRICT ONE STD. DETAILS
10.	(BD-08) FRAMES AND LIDS ADJUSTMENT WITH MILLING
11.	(BD-22) PAVEMENT PATCHING FOR HMA SURFACED PAVEMENT
12.	(BD-24) CURB OR CURB AND GUTTER REMOVAL AND REPLACEMENT
13.	(BD-32) BUTT JOINT AND HMA TAPER DETAILS
14.	(TC-10) TRAFFIC CONTROL AND PROTECTION FOR SIDE ROADS, INTERSECTIONS, AND DRIVEWAYS
15.	(TC-11) RAISED REFLECTIVE PAVEMENT MARKERS (SNOW-PLOW RESISTANT)
16.	(TC-13) TYPICAL PAVEMENT MARKINGS
17.	(TC-16) SHORT TERM PAVEMENT MARKING LETTERS AND SYMBOLS
18.	(TC-22) ARTERIAL ROAD INFORMATION SIGN



- INSTALLATION NOTES:
- SAW CUT TO DIMENSIONS SHOWN.
  - SAW CUT AREAS TO BE DRY AND FREE OF MATERIAL THAT ADVERSELY AFFECTS THE ADHESIVE BOND.
  - INSTALL THE REFLECTOR WITH AN APPROVED TWO-COMPONENT EPOXY ADHESIVE. EPOXY SHOULD NOT OBSCURE OR BLOCK THE LENS.
  - REFLECTOR SHALL BE 3M SERIES 190.
  - THE REFLECTOR HOLDER SHALL BE MARKERONE SERIES R100 REFLECTOR HOLDER.
  - FOR I-WAY MARKERS HEADING UPHILL, UPHILL GRIND TAPER MAY BE OMITTED.
- GENERAL NOTE:
- MARKER PLACEMENT AND COLOR SHALL CONFORM TO IDOT DISTRICT I HIGHWAY STANDARD TC-II.

RECESSED REFLECTIVE PAVEMENT MARKERS



Engineering Enterprises, Inc.  
CONSULTING ENGINEERS  
52 Wheeler Road  
Sugar Grove, Illinois 60554  
630.466.6700 / www.eeiweb.com

DESIGNED	-	REVISED	-
DRAWN	-	REVISED	-
CHECKED	-	REVISED	-
DATE	-	REVISED	-

STATE OF ILLINOIS  
DEPARTMENT OF TRANSPORTATION

GENERAL NOTES, HIGHWAY STANDARDS,  
LEGEND AND INDEX OF SHEETS

SCALE: N.T.S. SHEET 1 OF 1 SHEETS STA. TO STA.

F.A.U. RTE.	SECTION	COUNTY	TOTAL SHEETS	SHEET NO.
0098	24-00022-00-RS	KANE	18	2
		CONTRACT NO. XXXXXX		
ILLINOIS		FED. AID PROJECT		



Plotted: December 17, 2024 @ 7:39 AM By: Kris Pung - Model Name: 03 SDO - 22x34

FILE NAME = H:\SDS\PROJ\HA\_HAMPSHIRE\2024\HA2407\DWG FINAL ENG\HA2407-COVER

	CODE NUMBER	ITEM DESCRIPTION	UNIT	ROADWAY 75% FEDERAL 25% LOCAL 0005
Δ	21101615	TOPSOIL FURNISH AND PLACE, 4"	SQ YD	70
Δ	25200110	SODDING, SALT TOLERANT	SQ YD	70
	25200200	SUPPLEMENTAL WATERING	UNIT	5
	28000250	TEMPORARY EROSION CONTROL SEEDING	POUND	20
	28000510	INLET FILTERS	EACH	20
	40600290	BITUMINOUS MATERIALS (TACK COAT)	POUND	5,065
	40600370	LONGITUDINAL JOINT SEALANT	FOOT	1,864
	40600400	MIXTURE FOR CRACKS, JOINTS, AND FLANGEWAYS	TON	5
	40600982	HOT-MIX ASPHALT SURFACE REMOVAL - BUTT JOINT	SQ YD	75
	40603080	HOT-MIX ASPHALT BINDER COURSE, IL-19.0, N50	TON	980
	40604060	HOT-MIX ASPHALT SURFACE COURSE, IL-9.5, MIX "D", N50	TON	655
	44000164	HOT-MIX ASPHALT SURFACE REMOVAL, 3 3/4"	SQ YD	7,500
	44000500	COMBINATION CURB AND GUTTER REMOVAL	FOOT	300
	60255500	MANHOLES TO BE ADJUSTED	EACH	1

Δ INDICATES SPECIALTY ITEM



Engineering Enterprises, Inc.  
CONSULTING ENGINEERS  
52 Wheeler Road  
Sugar Grove, Illinois 60554  
630.466.6700 / www.eeiweb.com

DESIGNED	-	REVISED	-
DRAWN	-	REVISED	-
CHECKED	-	REVISED	-
DATE	-	REVISED	-

STATE OF ILLINOIS  
DEPARTMENT OF TRANSPORTATION

SUMMARY OF QUANTITIES			
SCALE: N.T.S.	SHEET 1	OF 3 SHEETS	STA. TO STA.

F.A.U. RTE.	SECTION	COUNTY	TOTAL SHEETS	SHEET NO.
0098	24-00022-00-RS	KANE	18	3
		CONTRACT NO. XXXXXX		
ILLINOIS FED. AID PROJECT				

FILE H:\SDS\PROJ\HA\_HAMPSHIRE\2024\HA2407\DWG FINAL ENG\HA2407-COVER



Plotted: December 17, 2024 @ 7:40 AM By: Kris Pung - Model Name: 04\_S00 - 22x34

FILE NAME = H:\SDS\PROJ\HA\_HAMPSHIRE\2024\HA2407\DWG FINAL ENG\HA2407-COVER

	CODE NUMBER	ITEM DESCRIPTION	UNIT	ROADWAY
				75% FEDERAL 25% LOCAL 0005
	60260100	INLETS TO BE ADJUSTED	EACH	20
	60404300	FRAMES AND GRATES, TYPE 3	EACH	2
	60406100	FRAMES AND LIDS, TYPE 1, CLOSED LID	EACH	1
	60604400	COMBINATION CURB AND GUTTER, TYPE B-6.18	FOOT	300
	67100100	MOBILIZATION	L SUM	1
	70102620	TRAFFIC CONTROL AND PROTECTION, STANDARD 701501	L SUM	1
	70300100	SHORT TERM PAVEMENT MARKING	FOOT	900
	70300150	SHORT TERM PAVEMENT MARKING REMOVAL	SQ FT	300
	70300211	TEMPORARY PAVEMENT MARKING - LINE 4" - PAINT	FOOT	3,730
Δ	78000100	THERMOPLASTIC PAVEMENT MARKING - LETTERS AND SYMBOLS	SQ FT	109.2
Δ	78000200	THERMOPLASTIC PAVEMENT MARKING - LINE 4"	FOOT	5,656
	78000400	THERMOPLASTIC PAVEMENT MARKING - LINE 6"	FOOT	426
Δ	78000600	THERMOPLASTIC PAVEMENT MARKING - LINE 12"	FOOT	337
Δ	78000650	THERMOPLASTIC PAVEMENT MARKING - LINE 24"	FOOT	24

Δ INDICATES SPECIALTY ITEM



Engineering Enterprises, Inc.  
CONSULTING ENGINEERS  
52 Wheeler Road  
Sugar Grove, Illinois 60554  
630.466.6700 / www.eeiweb.com

DESIGNED -	REVISED -
DRAWN -	REVISED -
CHECKED -	REVISED -
DATE -	REVISED -

STATE OF ILLINOIS  
DEPARTMENT OF TRANSPORTATION

SUMMARY OF QUANTITIES			
SCALE: N.T.S.	SHEET 2 OF 3 SHEETS	STA.	TO STA.

F.A.U. RTE.	SECTION		COUNTY	TOTAL SHEETS	SHEET NO.
0098	24-00022-00-RS		KANE	18	4
			CONTRACT NO. XXXXXX		
ILLINOIS		FED. AID	PROJECT		

FILE NAME = H:\SDS\PROJ\HA\_HAMPSHIRE\2024\HA2407\DWG FINAL ENG\HA2407-COVER



FILE NAME = H:\SDS\PROJ\HA\_HAMPSHIRE\2024\HA2407\DWG FINAL ENG\HA2407-COVER  
Plotted: December 17, 2024 @ 7:40 AM By: Kris Pung - Model Name: 05 SDO - 22x34

	CODE NUMBER	ITEM DESCRIPTION	UNIT	ROADWAY
				75% FEDERAL 25% LOCAL 0005
	78300200	RAISED REFLECTIVE PAVEMENT MARKER REMOVAL	EACH	100
	X0556100	PARTIAL DEPTH PATCHING (SPECIAL)	SQ YD	528
Δ	X7810300	RECESSED REFLECTIVE PAVEMENT MARKER	EACH	100
Δ	Z0030850	TEMPORARY INFORMATION SIGNING	SQ FT	77.1

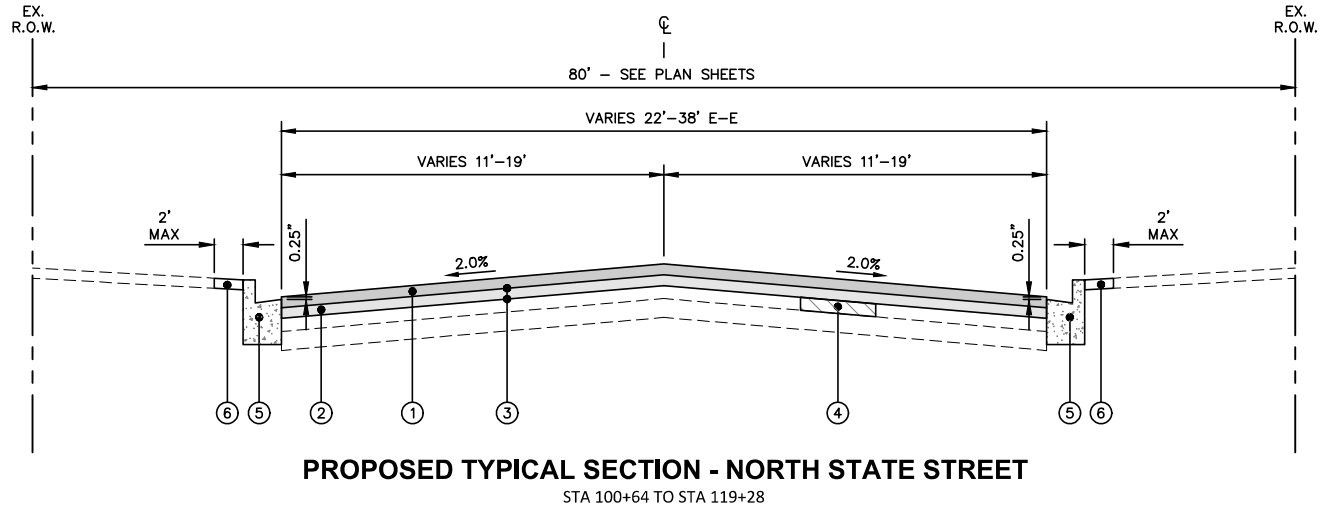
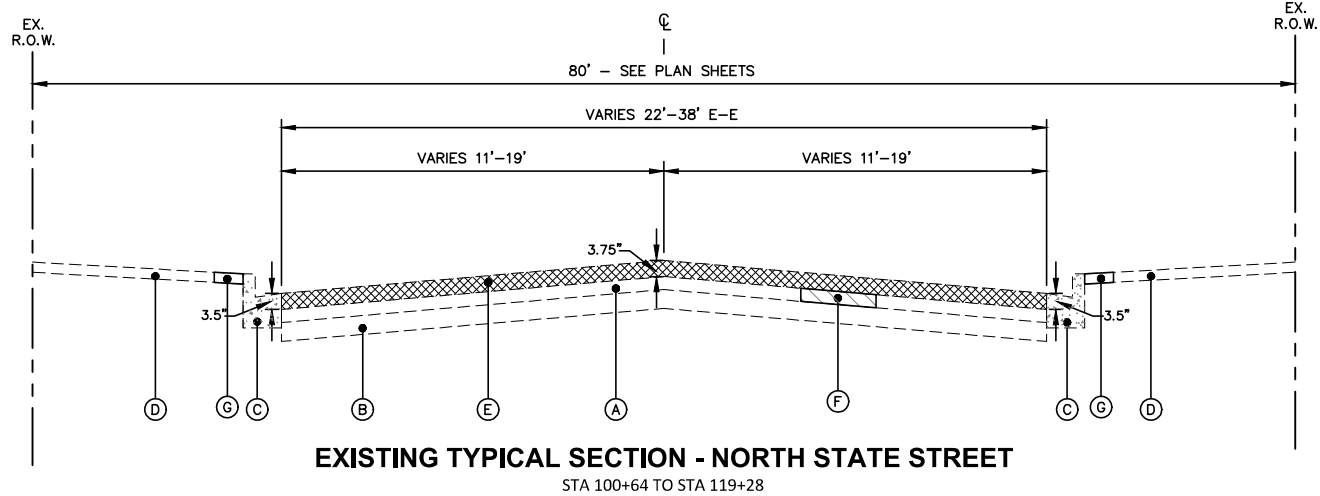
Δ INDICATES SPECIALTY ITEM

FILE NAME = H:\SDS\PROJ\HA\_HAMPSHIRE\2024\HA2407\DWG FINAL ENG\HA2407-COVER



Plotted: December 17, 2024 @ 7:40 AM By: Kris Pung - Model Name: 06 TypSection - 22x34

FILE NAME = H:\SDSKPROJ\HA\_HAMPSHIRE\2024\HA2407\DWG\FINAL ENG\HA2407-COVER



EXISTING LEGEND	
(A)	EXISTING HOT-MIX ASPHALT PAVEMENT (15")
(B)	EXISTING AGGREGATE BASE COURSE (4" - 7")
(C)	EXISTING COMBINATION CONCRETE CURB & GUTTER. B6.18
(D)	EXISTING PARKWAY
(E)	HOT-MIX ASPHALT SURFACE REMOVAL, 3.75"
(F)	PARTIAL DEPTH PATCHING (SPECIAL) - REMOVAL (LOCATIONS TO BE DETERMINED BY ENGINEER)
(G)	EXISTING SOD-REMOVAL

HOT-MIX ASPHALT MIXTURE REQUIREMENTS			
OPERATION	MIXTURE TYPE	AIR VOIDS ● NDES	QMP
PAVEMENT RESURFACING	HOT-MIX ASPHALT SURFACE COURSE, IL-9.5, MIX "D", N50, 1.5" HOT-MIX ASPHALT BINDER COURSE, IL-19.0, N50, 2.25"	4% ● 50 GYR. 4% ● 50 GYR.	QC/QA QC/QA
PARTIAL DEPTH PATCHING	HOT-MIX ASPHALT BINDER COURSE, IL-19.0, N70, 6"	4% ● 70 GYR.	QC/QA
QMP DESIGNATION: QUALITY CONTROL/QUALITY ASSURANCE (QC/QA) PER LR 1030-2.			
THE UNIT WEIGHT TO CALCULATE ALL HMA SURFACE MIXTURE QUANTITIES IS 112 LBS/SQ YD/IN			
THE "AC TYPE" FOR POLYMERIZED HMA MIXES SHALL BE "SBS/SBR PG 76-22" AND FOR NON-POLYMERIZED HMA THE "AC TYPE" SHALL BE "PG 64-22". UNLESS MODIFIED BY RECLAIMED MATERIALS SPECIFICATIONS.			

PROPOSED LEGEND	
(1)	HOT-MIX ASPHALT SURFACE COURSE, IL-9.5, MIX "D", N50, 1.5"
(2)	HOT-MIX ASPHALT BINDER COURSE, IL-19.0, N50, 2.25"
(3)	BITUMINOUS MATERIALS (TACK COAT)
(4)	PARTIAL DEPTH PATCHING (SPECIAL), 6" (LOCATIONS TO BE DETERMINED BY ENGINEER)
(5)	COMBINATION CONCRETE CURB AND GUTTER REMOVAL AND REPLACEMENT (SPOT REMOVAL AND REPLACEMENT AS DIRECTED BY THE ENGINEER)
(6)	TOPSOIL AND SODDING, SALT TOLERANT

NOTES:  
THE PATCHING QUANTITIES HAVE BEEN ESTIMATED BASED ON FIELD OBSERVATIONS DURING DESIGN. ACTUAL QUANTITIES TO BE DETERMINED DURING CONSTRUCTION.

NO PROPOSED WORK WILL TAKE PLACE OUTSIDE OF THE R.O.W.



Engineering Enterprises, Inc.  
CONSULTING ENGINEERS  
52 Wheeler Road  
Sugar Grove, Illinois 60554  
630.466.6700 / www.eeiweb.com

DESIGNED -	REVISED -
DRAWN -	REVISED -
CHECKED -	REVISED -
DATE -	REVISED -

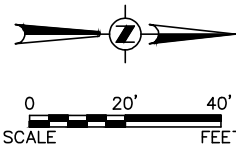
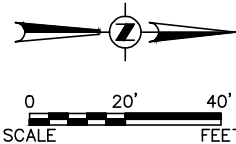
STATE OF ILLINOIS  
DEPARTMENT OF TRANSPORTATION

TYPICAL SECTIONS




SCALE: N.T.S. SHEET 1 OF 1 SHEETS STA. N/A TO STA. N/A

F.A.J. RTE.	SECTION	COUNTY	TOTAL SHEETS	SHEET NO.
0098	24-00022-00-RS	KANE	18	6
		CONTRACT NO.	XXXXXX	
		ILLINOIS FED. AID PROJECT		





## LEGEND

- |   |   |
|---|---|
|  | HOT-MIX ASPHALT SURFACE REMOVAL,<br>3.75" AND RESURFACING |
|  | HOT-MIX ASPHALT SURFACE REMOVAL,<br>BUTT-JOINT            |
|  | COMB CONC C&G REMOVAL AND<br>REPLACEMENT                  |

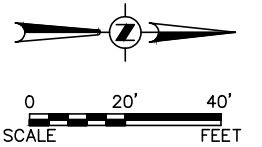
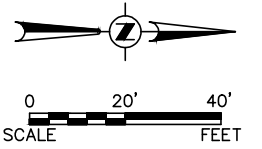
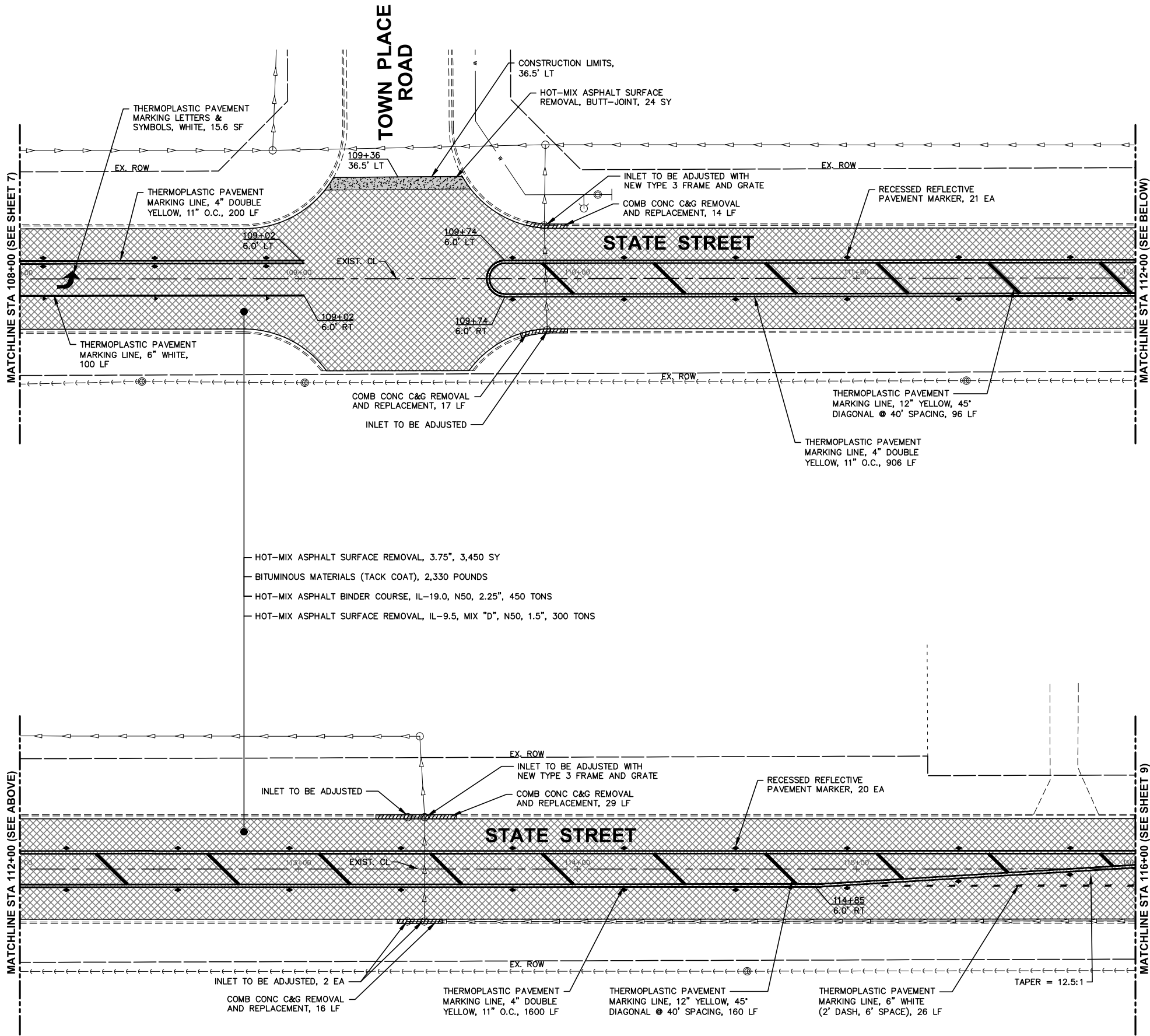
DESIGNED -	REVISED -
DRAWN -	REVISED -
CHECKED -	REVISED -
DATE -	REVISED -

F.A.U. RTE.	SECTION	COUNTY	TOTAL SHEETS	SHEET NO.
0098	24-00022-00-RS	KANE	18	7
		CONTRACT NO. XXXXXX		
ILLINOIS		FED. AID PROJECT		



Plotted: December 17, 2024 @ 7:40 AM By: Kris Pung - Model Name: 08 State Street 22x34

FILE NAME = H:\SDSKPROJ\HA\_HAMPSHIRE\2024\HA2407\DWG FINAL ENG\HA2407-PLAN



NOTES:  
ANY SOILS GENERATED FROM CURB REPAIRS SHALL REMAIN ON SITE IN THE RIGHT-OF-WAY. ANY SUCH SOIL SHALL BE PLACED IN THE PARKWAY NEAR STA 104+00 TO 109+00 LEFT AND AS DIRECTED BY THE ENGINEER.

LEGEND			
	HOT-MIX ASPHALT SURFACE REMOVAL, 3.75" AND RESURFACING		
	HOT-MIX ASPHALT SURFACE REMOVAL, BUTT-JOINT		
	COMB CONC C&G REMOVAL AND REPLACEMENT		



**Engineering Enterprises, Inc.**  
CONSULTING ENGINEERS  
52 Wheeler Road  
Sugar Grove, Illinois 60554  
630.466.6700 / [www.eeiweb.com](http://www.eeiweb.com)

DESIGNED -	REVISED -
DRAWN -	REVISED -
CHECKED -	REVISED -
DATE -	REVISED -



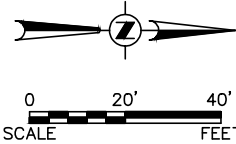
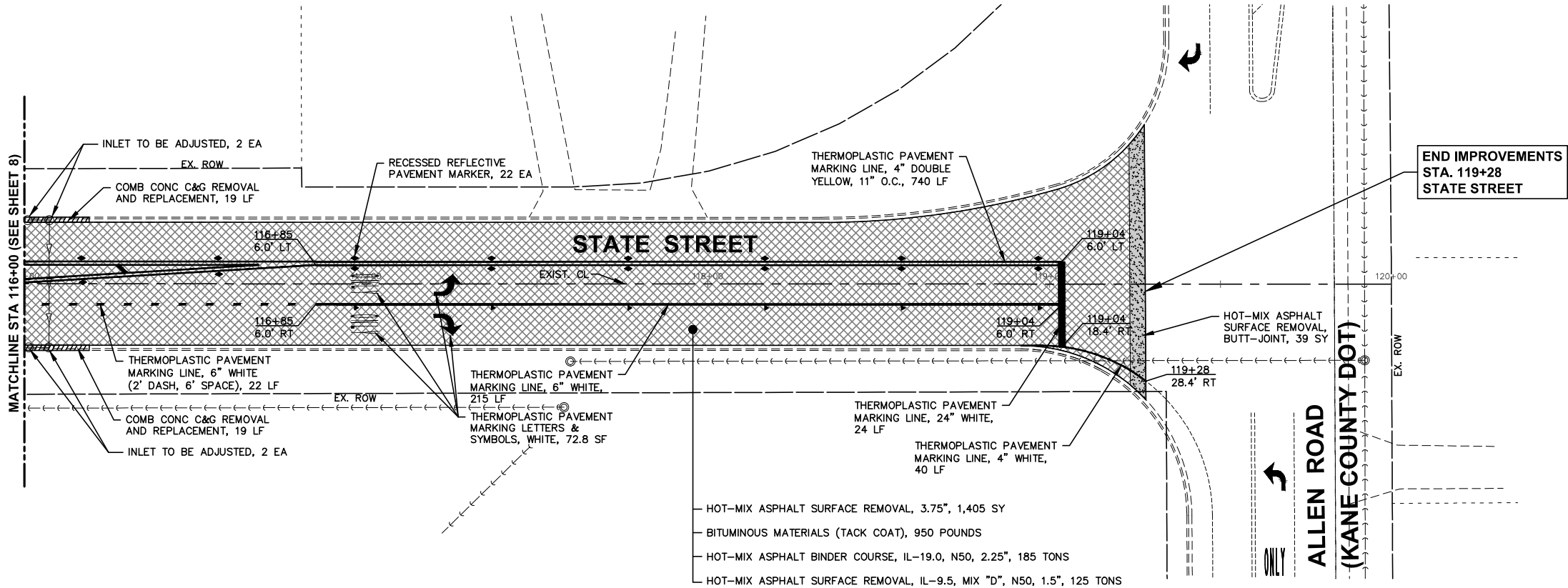
RESURFACING PLAN			
SCALE: 1"=20'	SHEET 2 OF 3 SHEETS	STA. 108+00 TO STA. 116+00	

F.A.U. RTE.	SECTION	COUNTY	TOTAL SHEETS	SHEET NO.
0098	24-00022-00-RS	KANE	18	8
		CONTRACT NO. XXXXXX		
ILLINOIS FED. AID PROJECT				



FILE NAME = H:\SDSKPROJ\HA\_HAMPSHIRE\2024\HA2407\DWG FINAL ENG\HA2407-PLAN  
Plotted: December 17, 2024 @ 7:40 AM By: Kris Pung - Model Name: 09 State Street 22x34

FILE NAME = H:\SDSKPROJ\HA\_HAMPSHIRE\2024\HA2407\DWG FINAL ENG\HA2407-PLAN



NOTES:  
ANY SOILS GENERATED FROM CURB REPAIRS SHALL REMAIN ON SITE IN THE RIGHT-OF-WAY. ANY SUCH SOIL SHALL BE PLACED IN THE PARKWAY NEAR STA 104+00 TO 109+00 LEFT AND AS DIRECTED BY THE ENGINEER.

LEGEND

- HOT-MIX ASPHALT SURFACE REMOVAL, 3.75" AND RESURFACING
- HOT-MIX ASPHALT SURFACE REMOVAL, BUTT-JOINT
- COMB CONC C&G REMOVAL AND REPLACEMENT



**Engineering Enterprises, Inc.**  
**CONSULTING ENGINEERS**  
52 Wheeler Road  
Sugar Grove, Illinois 60554  
630.466.6700 / www.eeiweb.com

DESIGNED -	REVISED -
DRAWN -	REVISED -
CHECKED -	REVISED -
DATE -	REVISED -

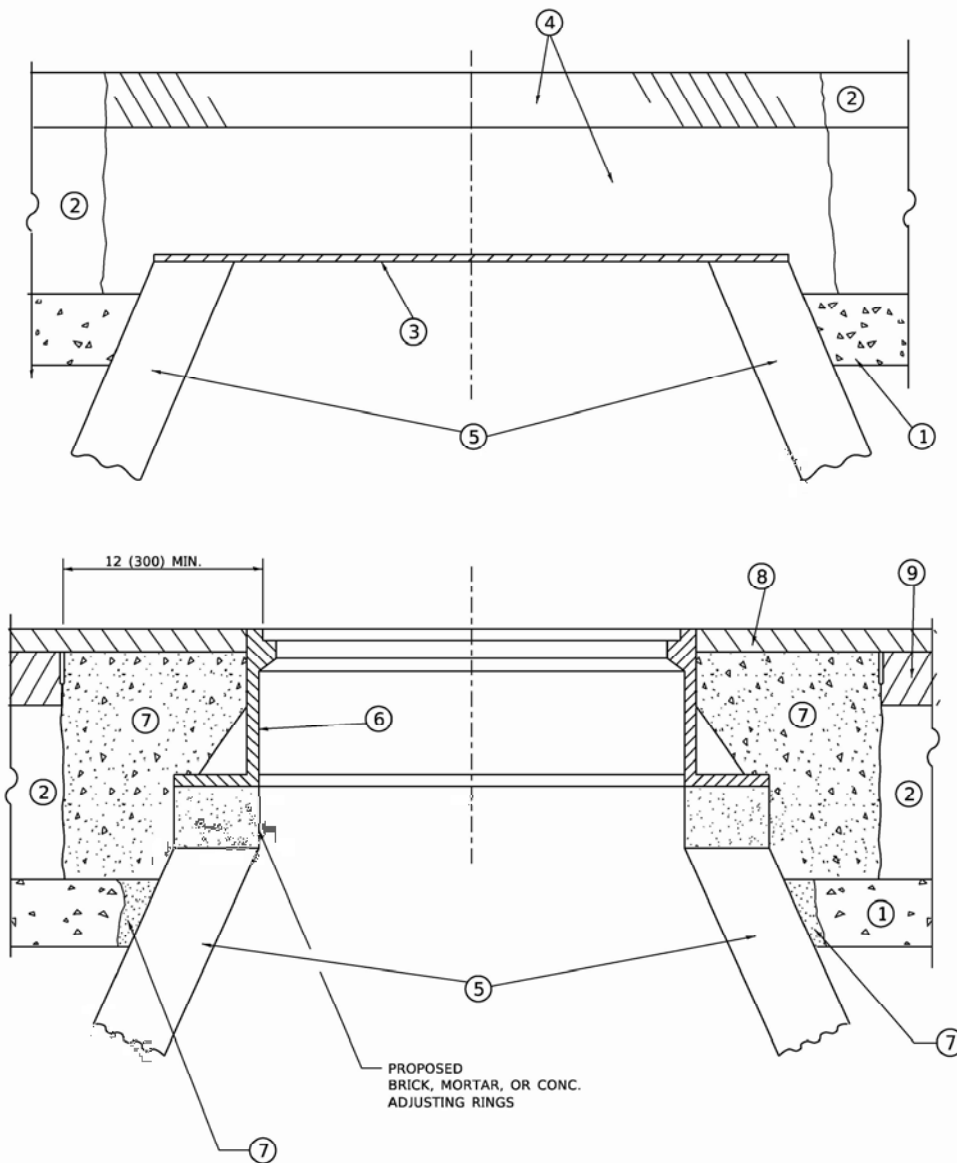
STATE OF ILLINOIS  
DEPARTMENT OF TRANSPORTATION

RESURFACING PLAN

SCALE: 1"=20' SHEET 3 OF 3 SHEETS STA. 116+00 TO STA. 119+28

F.A.U. RTE.	SECTION	COUNTY	TOTAL SHEETS	SHEET NO.
0098	24-00022-00-RS	KANE	18	9
		CONTRACT NO. XXXXXX		
ILLINOIS		FED. AID PROJECT		





**DETAILS FOR FRAMES AND LIDS ADJUSTMENT  
WITH MILLING**

**NOTES**

- EXISTING BROKEN FRAMES AND LIDS SHALL BE REMOVED AND DISPOSED OF BY THE CONTRACTOR AND SHALL BE REPLACED AS DIRECTED BY THE ENGINEER. REPLACEMENT FRAMES AND LIDS WILL BE PAID FOR IN ACCORDANCE WITH ARTICLE 109.04 OF THE STANDARD SPECIFICATIONS UNLESS A SEPARATE PAY ITEM HAS BEEN PROVIDED.
- IF THE EXISTING LIDS ARE OPEN, THE FRAME WILL BE ADJUSTED TO THE ELEVATION OF THE MILLED PAVEMENT SURFACE PRIOR TO THE MILLING OPERATION. THE FRAME WILL NOT BE REMOVED AND COVERED BY THE METAL PLATE.
- CITY OF CHICAGO CASTINGS ARE THE PROPERTY OF THE CITY AND THE CONTRACTOR SHALL NOTIFY THE CITY FOR REMOVAL AND DISPOSITION OF THE CASTINGS.
- THE METAL PLATE USED TO COVER THE STRUCTURE SHALL REMAIN THE PROPERTY OF THE CONTRACTOR.
- THE CONTRACTOR SHALL REMOVE ALL TRAFFIC CONTROL DEVICES BY THE END OF EACH WORK SHIFT.

**CONSTRUCTION PROCEDURES**

- STAGE 1 (BEFORE PAVEMENT MILLING)**
- REMOVE A MINIMUM OF 12 (300) OF THE PAVEMENT FROM AROUND THE STRUCTURE.
  - REMOVE THE EXISTING FRAME AND LID FROM THE STRUCTURE.
  - COVER THE STRUCTURE OPENING WITH A 36 (900) DIAMETER METAL PLATE.
  - BACKFILL WITH CRUSHED STONE AND HMA SURFACE MIX APPROVED BY THE ENGINEER. (MIN. 3 (80) HMA TO REMAIN AFTER MILLING).
- STAGE 2 (AFTER PAVEMENT MILLING)**
- REMOVE THE HMA SURFACE MIX AND CRUSHED STONE.
  - INSTALL THE FRAME AND LID; ADJUST THE FRAME TO ITS FINAL SURFACE ELEVATION.
  - THE SURROUNDING SPACE SHALL BE FILLED WITH CLASS PP-2\* CONCRETE TO THE ELEVATION OF THE SURFACE OF THE EXISTING BASE COURSE OR THE BINDER COURSE.
- \* UNLESS OTHERWISE SPECIFIED IN THE PLANS.

THE PROCEDURE EXPLAINED ABOVE SHALL CONFORM TO THE APPLICABLE PORTIONS OF SECTIONS 353, 406, 602, AND 603 OF THE STANDARD SPECIFICATIONS EXCEPT THAT "THE CONTRACTOR SHALL ADJUST THE STRUCTURES TO THE FINISHED PAVEMENT ELEVATION NO MORE THAN 5 CALENDAR DAYS PRIOR TO PLACEMENT OF THE FINAL LIFT OF SURFACE UNLESS APPROVED BY THE ENGINEER."

**LEGEND**

- |  |                               |
|--|-------------------------------|
| ① SUB-BASE GRANULAR MATERIAL                 | ⑥ FRAME AND LID (SEE NOTES)   |
| ② EXISTING PAVEMENT                          | ⑦ CLASS PP-2* CONCRETE        |
| ③ 36 (900) DIAMETER METAL PLATE              | ⑧ PROPOSED HMA SURFACE COURSE |
| ④ PROPOSED CRUSHED STONE AND HMA SURFACE MIX | ⑨ PROPOSED HMA BINDER COURSE  |
| ⑤ EXISTING STRUCTURE                         |                               |

**LOCATION OF STRUCTURES**

THE CONTRACTOR WILL BE REQUIRED TO KEEP A RECORD OF THE LOCATIONS OF THE BURIED STRUCTURES ACCORDING TO THE STATION AND DISTANCE LEFT OR RIGHT OF THE CENTERLINE OF PAVEMENT. UPON COMPLETION OF THE WORK, THE CONTRACTOR WILL DELIVER THE RECORD TO THE ENGINEER.

**BASIS OF PAYMENT**

- REMOVING FRAMES AND LIDS ON DRAINAGE AND UTILITY STRUCTURES IN THE PAVEMENT PRIOR TO MILLING, AND ADJUSTING TO FINAL GRADE PRIOR TO PLACING THE SURFACE COURSE, WILL BE PAID FOR AT THE CONTRACT UNIT PRICE EACH FOR "FRAMES AND LIDS TO BE ADJUSTED (SPECIAL)."
- THIS WORK WILL NOT BE PAID FOR WHEN DRAINAGE AND UTILITY STRUCTURES ARE SPECIFIED FOR PAYMENT AS STRUCTURE RECONSTRUCTION.
- NEW FRAMES AND LIDS, WHEN SPECIFIED, WILL BE PAID FOR SEPARATELY.
- WHEN STRUCTURES ARE TO BE ADJUSTED OR RECONSTRUCTED, THE LOWERING AND RAISING OF THE FRAMES AND LIDS WILL NOT BE PAID FOR SEPARATELY BUT WILL BE INCLUDED IN THE COST OF THE CORRESPONDING PAY ITEM.

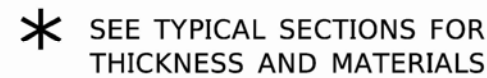
ALL DIMENSIONS ARE IN INCHES (MILLIMETERS) UNLESS OTHERWISE SHOWN

	USER NAME = Lawrence.DeManche	DESIGNED - R. SHAH	REVISED - R. BORO 03-09-11	STATE OF ILLINOIS DEPARTMENT OF TRANSPORTATION	DETAILS FOR FRAMES AND LIDS ADJUSTMENT WITH MILLING	F.A.U. RTE. 0098	SECTION 24-00022-00-RS	COUNTY KANE	TOTAL SHEETS 18	SHEET NO. 10
	PLOT SCALE = 100.0000 ' / in.	DRAWN -	REVISED - R. BORO 12-06-11							
	CHECKED -	REVISED - K. SMITH 11-18-22								
	PLOT DATE = 9/15/2023	DATE - 10-25-94	REVISED - K. SMITH 09-15-23							
SCALE: NONE						SHEET 1 OF 1 SHEETS		STA. TO STA.		
ILLINOIS						BD600-03 (BD-08)				
FED. AID PROJECT						CONTRACT NO.				



REFER TO SECTION 442 OF THE STANDARD SPECIFICATIONS FOR ROAD AND BRIDGE CONSTRUCTION AND THE RECURRING SPECIAL PROVISION "PATCHING WITH HOT-MIX ASPHALT OVERLAY REMOVAL."

1. REFER TO SECTION 442 OF THE STANDARD SPECIFICATIONS FOR ROAD AND BRIDGE CONSTRUCTION AND THE RECURRING SPECIAL PROVISION "PATCHING WITH HOT-MIX ASPHALT OVERLAY REMOVAL."
2. SAW CUT/SCORING OF EXISTING HMA OVERLAY IS INCLUDED IN THE COST OF PAVEMENT PATCHING.
3. SAW CUT/SCORING OF EXISTING PAVEMENT IS INCLUDED IN THE COST OF PAVEMENT PATCHING.



1. REMOVE THE EXISTING HMA MATERIAL OVER THE AREA TO BE PATCHED.
2. REMOVE AND REPLACE WITH CLASS C OR D PATCH.
3. REPLACE HMA MATERIAL OVER THE AREA TO BE PATCHED.

1. MILL HMA FIRST IF THERE IS AT LEAST 4½ INCHES OR MORE OF HMA MATERIAL ON TOP OF THE EXISTING PAVEMENT OR IF THE PAVEMENT IS FULL DEPTH HMA. A MINIMUM OF 2 INCHES OF HMA MATERIAL SHALL BE IN PLACE AFTER MILLING.
2. REMOVE AND REPLACE WITH FULL DEPTH CLASS D PATCHES TO TOP OF MILLED SURFACE.

MODEL: Default  
FILE NAME: pw:\idiot-pw.bentley.com:PWIDOTDocuments\IDOT\_Offices\IDistrict\_1\Projects\ID's\Std22x34\CADDData\CADSheets\bd22.dgn

USER NAME = Lawrence.DeManche	DESIGNED - R. SHAH	REVISED - R. BORO 01-01-07
	DRAWN -	REVISED - R. BORO 09-04-07
PLOT SCALE = 100.0000' / in.	CHECKED -	REVISED - K. ENG 10-27-08
PLOT DATE = 11/18/2022	DATE = 10-25-94	REVISED - K. SMITH 11-18-22

**STATE OF ILLINOIS  
DEPARTMENT OF TRANSPORTATION**

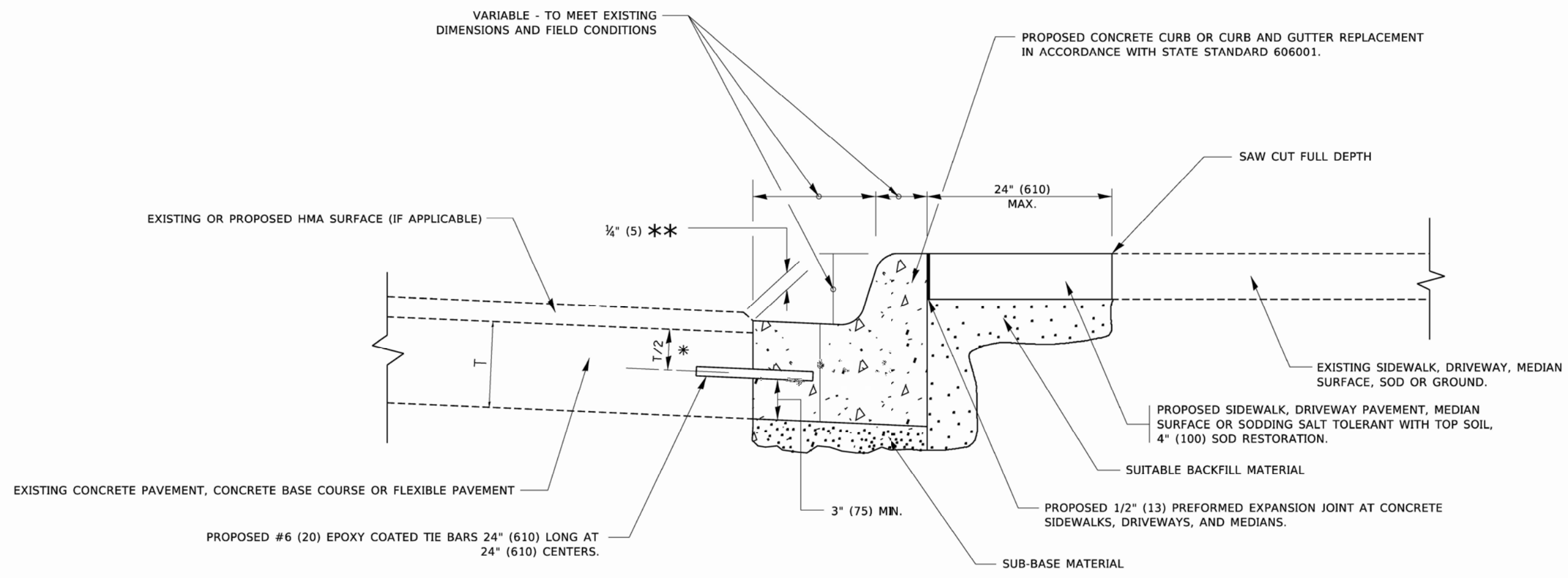
## PAVEMENT PATCHING FOR HMA SURFACED PAVEMENT

SCALE: NONE	SHEET 1	OF 1	SHEETS	STA.	TO STA.
-------------	---------	------	--------	------	---------

F.A.U. RTE.	SECTION	COUNTY	TOTAL SHEETS	SHEET NO.
0098	24-00022-00-RS	KANE	18	11
BD400-04 (BD-22)		CONTRACT NO.		
ILLINOIS		FED. AID PROJECT		



MODEL: Default  
FILE NAME: I:\work\lancon dot illinois gov\PI\DOT\Documents\DOT Offices\District 1\Projects\DOT\24-00022\CA\0 sheets\024.dgn



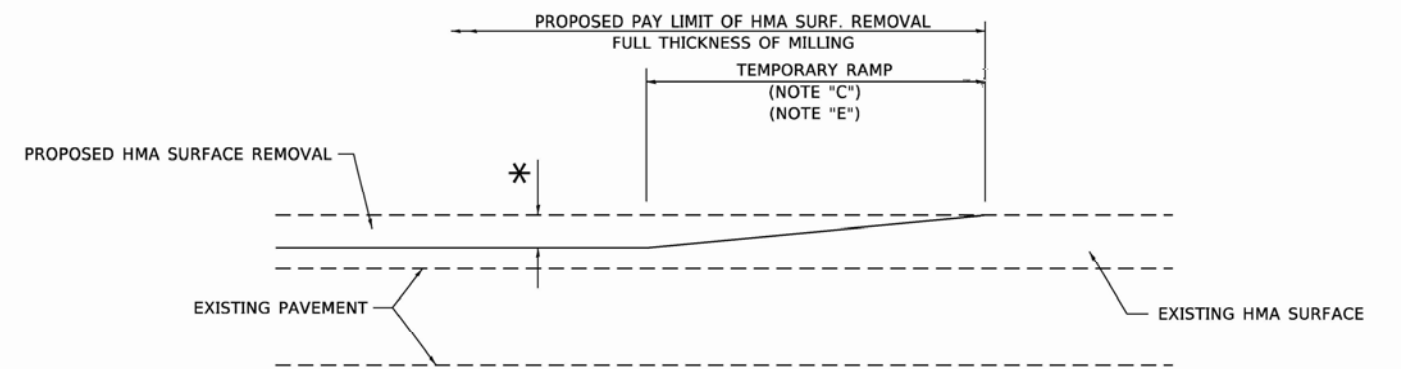
- \* 3" (75) MINIMUM FROM TOP AND BOTTOM OF THE CONCRETE PAVEMENT OR BASE COURSE.
- \*\* IF THE FINAL SURFACE OF THE PAVEMENT IS CONCRETE, THE GUTTER IS TO BE FLUSH WITH THE PAVEMENT.

# CURB OR CURB AND GUTTER REMOVAL AND REPLACEMENT

ALL DIMENSIONS ARE IN INCHES (MILLIMETERS) UNLESS OTHERWISE SHOWN.

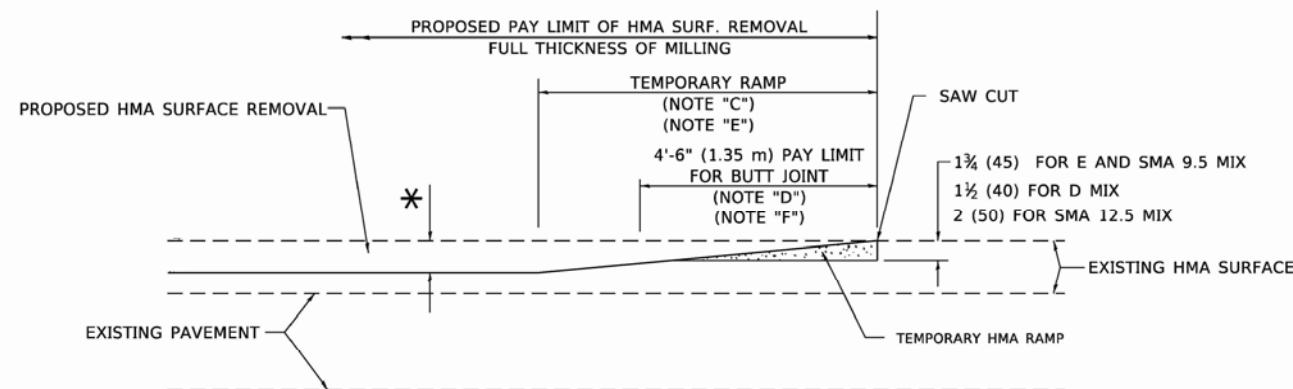
	USER NAME = footemj	DESIGNED - A. HOUSEH	REVISED - A. ABBAS 03-21-97	STATE OF ILLINOIS DEPARTMENT OF TRANSPORTATION	CURB OR CURB AND GUTTER REMOVAL AND REPLACEMENT			F.A.U. RTE. 0098	SECTION 24-00022-00-RS	COUNTY KANE	TOTAL SHEETS 18	SHEET NO. 12
	PLOT SCALE = 50.0000 ' / in.	CHECKED -	REVISED - R. BORO 12-15-09					BD600-06 (BD-24)		CONTRACT NO.		
	PLOT DATE = 7/11/2019	DATE - 03-11-94	REVISED - K. SMITH 07-11-19		SCALE: NONE			SHEET 1	OF 1	SHEETS	STA.	TO STA.
								ILLINOIS FED. AID PROJECT				





**MILLED TEMPORARY RAMP**  
(FOR BUTT JOINT AND HMA TAPER SEE DETAIL BELOW)

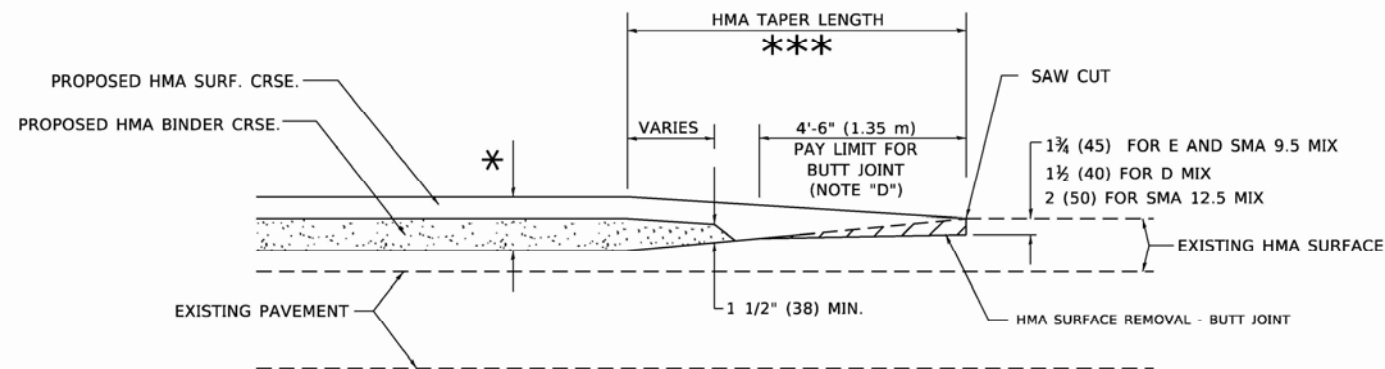
**OPTION 1**



**HMA CONSTRUCTED TEMPORARY RAMP**  
(FOR BUTT JOINT AND HMA TAPER SEE DETAIL BELOW)

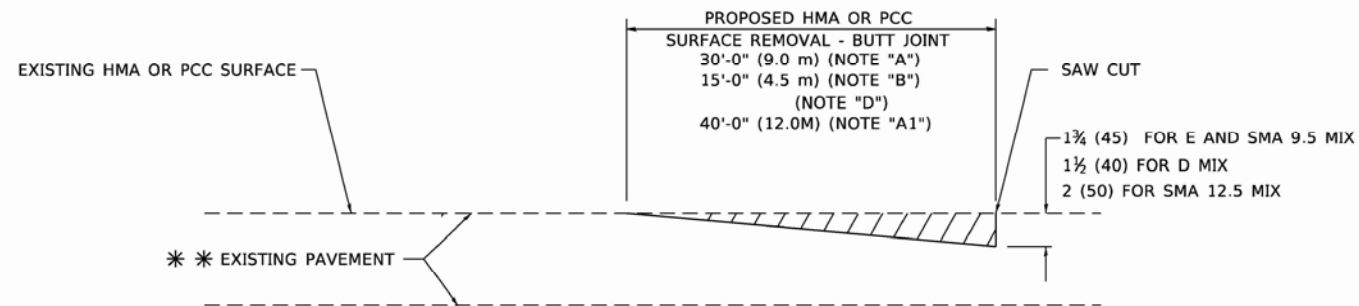
**OPTION 2**

**TYPICAL TEMPORARY RAMP**

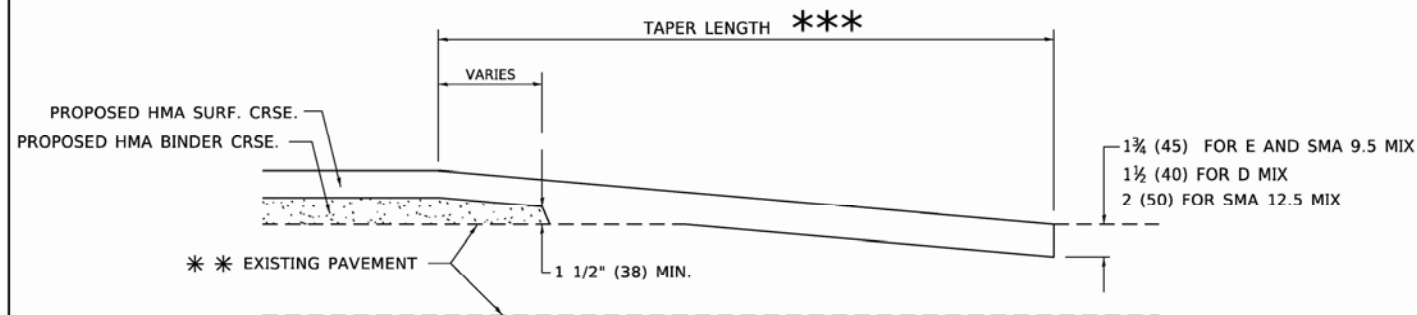


**BUTT JOINT AND  
HMA TAPER**

**TYPICAL BUTT JOINT AND HMA TAPER  
FOR MILLING AND RESURFACING**



**BUTT JOINT DETAIL**



**HMA TAPER DETAIL**

**TYPICAL BUTT JOINT AND HMA TAPER  
FOR RESURFACING ONLY**

\* \* \* PC CONCRETE, HMA OR HMA RESURFACED PAVEMENT.

**GENERAL NOTES**

- A. MAINLINE ARTERIAL ROADWAYS AND MAJOR SIDE ROADS.
- A1. INTERSTATES
- B. MINOR SIDE ROADS.
- C. THE TEMP. RAMP SHALL BE CONSTRUCTED IMMEDIATELY UPON REMOVAL OF THE EXISTING HMA SURFACE.
- D. THE BUTT JOINT SHALL BE CONSTRUCTED IMMEDIATELY PRIOR TO PLACING THE PROPOSED HMA COURSES.
- E. TAPER THE TEMP. RAMP AT A RATE OF 3' - 4" (1.02m) PER 1 INCH (25 mm) OF MILLING THICKNESS.  
\* SEE TYPICAL SECTIONS FOR MILLING THICKNESS.
- F. SEE ARTICLE 406.08 AND 406.14 OF THE STANDARD SPECIFICATIONS FOR "HMA AND/OR PCC SURFACE REMOVAL, BUTT JOINT".  
\*\*\* 20'-0" (6.1 m) PER 1 (25) RESURFACING (NOTE "A")  
10'-0" (3.0 m) PER 1 (25) RESURFACING (NOTE "B")

**BASIS OF PAYMENT**

- 1. THE BUTT JOINT WILL BE PAID FOR AT THE CONTRACT UNIT PRICE PER SQUARE YARD (SQUARE METER) FOR "HOT-MIX ASPHALT SURFACE REMOVAL - BUTT JOINT" OR FOR "PORTLAND CEMENT CONCRETE SURFACE REMOVAL- BUTT JOINT".
- 2. THE TEMPORARY RAMP AND SAW CUT SHALL BE INCLUDED IN THE UNIT COST FOR HMA OR PCC SURFACE REMOVAL-BUTT JOINT.

ALL DIMENSIONS ARE IN INCHES (MILLIMETERS) UNLESS OTHERWISE SHOWN.

MODEL: Default  
FILE NAME: I:\1105-pw-bentley.com-PWIDOT\Documents\DOT Office\Drawings\Projects\DOT\40022\40022-00\40022-00-00\40022-00-00-00.dgn

USER NAME = Lawrence.DeManche	DESIGNED - M. DE YONG	REVISED - A. ABBAS 03-21-97
	DRAWN -	REVISED - M. GOMEZ 04-06-01
PLOT SCALE = 100.0000' / in.	CHECKED -	REVISED - R. BORO 01-01-07
PLOT DATE = 11/18/2022	DATE - 06-13-90	REVISED - K. SMITH 11-18-22

STATE OF ILLINOIS  
DEPARTMENT OF TRANSPORTATION

BUTT JOINT AND  
HMA TAPER DETAILS

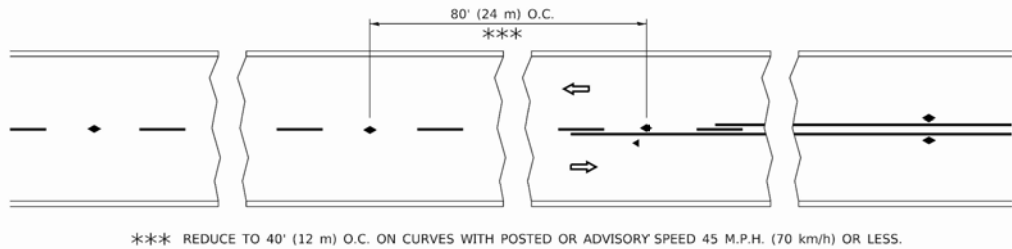
SCALE: NONE SHEET 1 OF 1 SHEETS STA. TO STA.

F.A.U. RTE.	SECTION	COUNTY	TOTAL SHEETS	SHEET NO.
0098	24-00022-00-RS	KANE	18	13
BD400-05 BD-32		CONTRACT NO.		
		ILLINOIS FED. AID PROJECT		

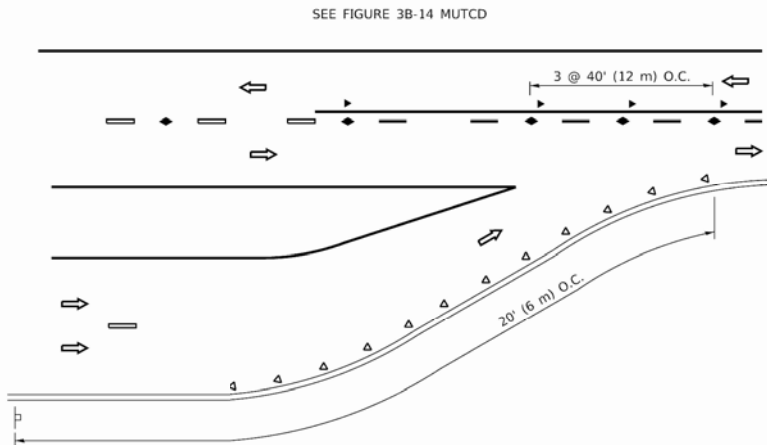




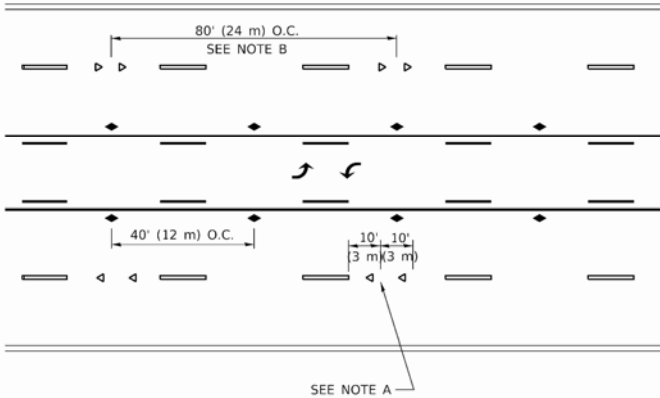




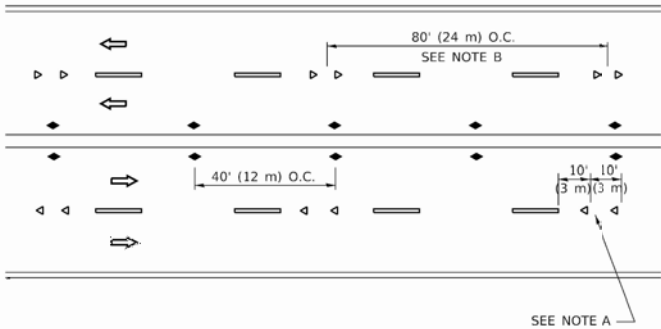
TWO-LANE/TWO-WAY



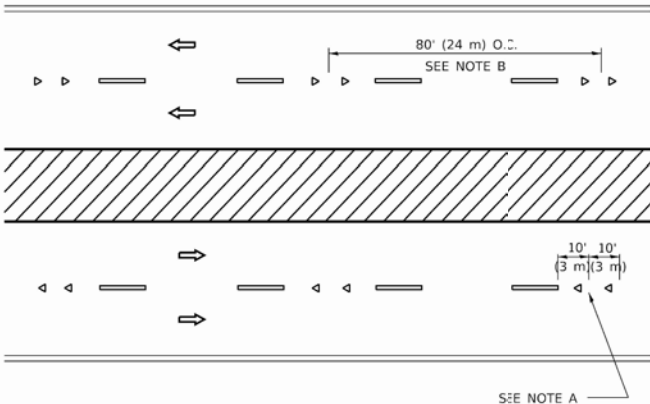
LANE REDUCTION TRANSITION



TWO-WAY LEFT TURN



MULTI-LANE/UNDIVIDED



MULTI-LANE/DIVIDED

GENERAL NOTES

1. MARKERS USED WITH DASHED LINES SHALL BE CENTERED IN THE GAP BETWEEN SEGMENTS.
2. MARKERS USED ADJACENT TO SOLID LINES SHALL BE OFFSET 2 TO 3 (50 TO 75) TOWARD TRAFFIC AS SHOWN.
3. MARKERS THROUGH TANGENTS LESS THAN 500' (150 m) IN LENGTH BETWEEN CURVES SHALL BE INSTALLED AT THE LESSER OF THE TWO CURVE SPACINGS.
4. MARKERS ARE TO BE USED ADJACENT TO BOTH SOLID WHITE LINES IN DUAL LEFT TURN LANES

SYMBOLS

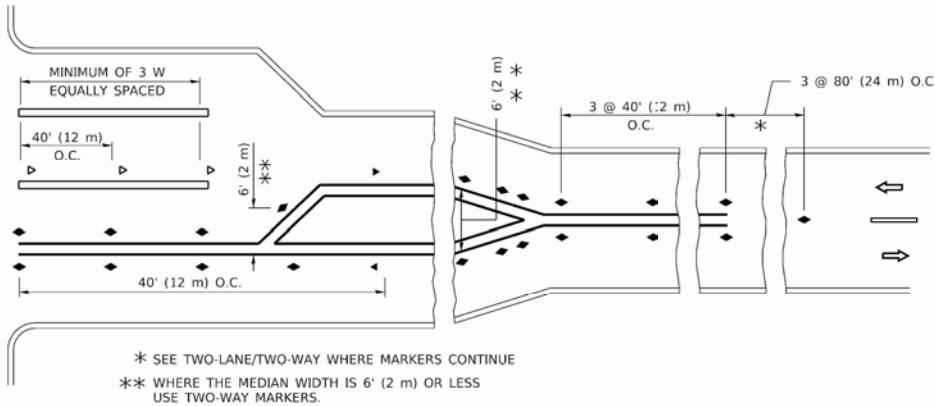
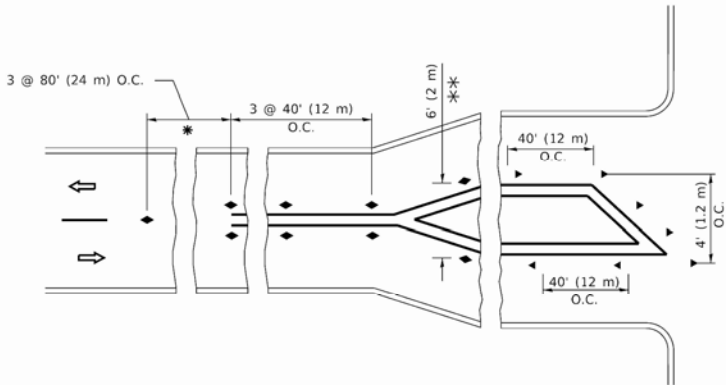
- YELLOW STRIPE
- WHITE STRIPE
- ONE-WAY AMBER MARKER
- ONE-WAY CRYSTAL MARKER (W/O)
- TWO-WAY AMBER MARKER

LANE MARKER NOTES

- A. USE DOUBLE LANE LINE MARKERS SPACED AS SHOWN.
- B. REDUCE TO 40' (12 m) O.C. ON CURVES WHERE ADVISORY SPEEDS ARE 10 M.P.H (20 km/h) LOWER THAN POSTED SPEEDS.

DESIGN NOTES

1. DOUBLE LANE LINE MARKERS SHALL BE USED UNLESS SPECIFIED OTHERWISE.
2. EXCEPT AS SHOWN ON THE LANE REDUCTION TRANSITION AND FREEWAY EXIT RAMP DETAIL, MARKERS ARE NOT TO BE SPECIFIED ON RIGHT EDGE LINES.
3. THE EXACT MARKER LIMITS, SPACING, AND COLOR SHALL BE INCLUDED IN THE PLANS WHEN STANDARD SPECIFICATIONS ARE NOT BEING USED.
4. MARKERS SHOULD NOT BE USED ALONGSIDE CURBS EXCEPT FOR EXTREMELY SHORT SECTIONS OF CURBS WHERE NOT MORE THAN TWO MARKERS WOULD BE INVOLVED.



TURN LANES

All dimensions are in inches (millimeters) unless otherwise shown.

MODEL: Default  
FILE NAME: I:\w\1108\FBD\NITEG Illinois.gov\PH\DOT\Documents\DOT Office\District 1\Project\ID\AS\22-24\CADD\at\CAD\sheet\c11.dgn

USER NAME	= footemj	DESIGNED	-	REVISED	- T. RAMMACHER 03-12-99
		DRAWN	-	REVISED	- T. RAMMACHER 01-06-00
PLOT SCALE	= 50.0000" / in.	CHECKED	-	REVISED	- C. JUCIUS 09-09-09
PLOT DATE	= 3/4/2019	DATE	-	REVISED	- C. JUCIUS 07-01-13

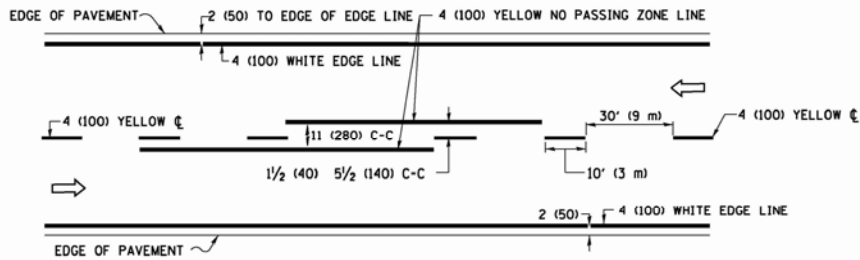
STATE OF ILLINOIS  
DEPARTMENT OF TRANSPORTATION

TYPICAL APPLICATIONS  
RAISED REFLECTIVE PAVEMENT MARKERS (SNOW-PLOW RESISTANT)

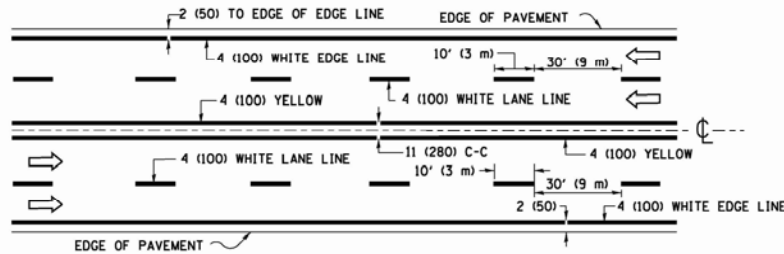
SCALE: NONE SHEET 1 OF 1 SHEETS STA. TO STA.

F.A.U. RTE.	SECTION	COUNTY	TOTAL SHEETS	SHEET NO.
0098	24-00022-00-RS	KANE	18	15
TC-11		CONTRACT NO.		
ILLINOIS		FED. AID PROJECT		

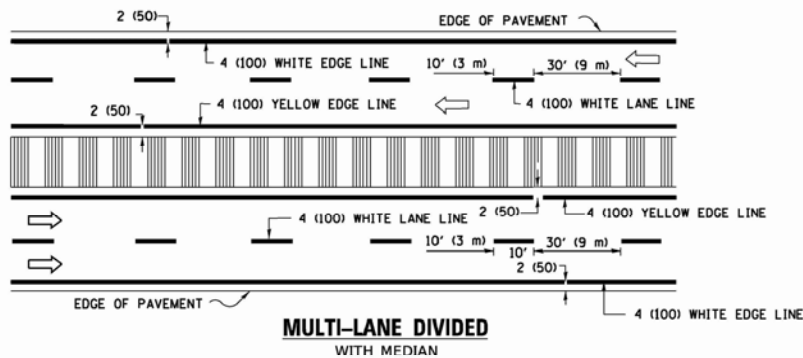




2-LANE ROADWAY

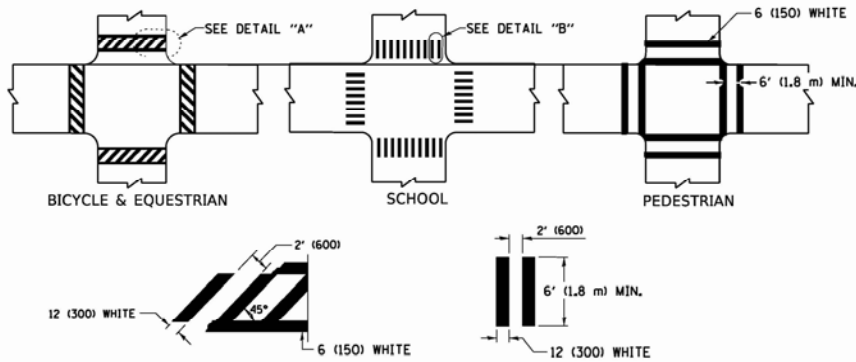


MULTI-LANE UNDIVIDED



MULTI-LANE DIVIDED WITH MEDIAN

TYPICAL LANE AND EDGE LINE MARKING

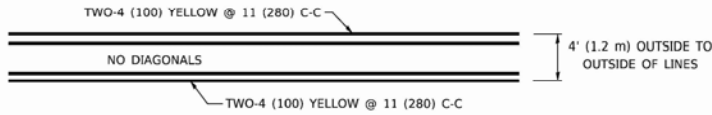


DETAIL "A"

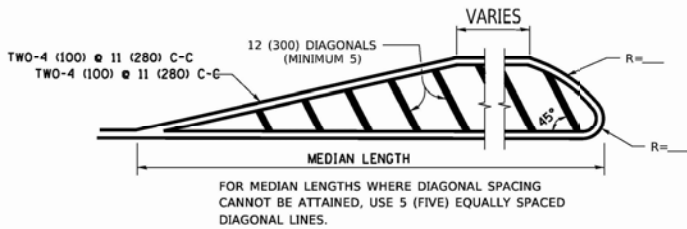
DETAIL "B"

TYPICAL CROSSWALK MARKING

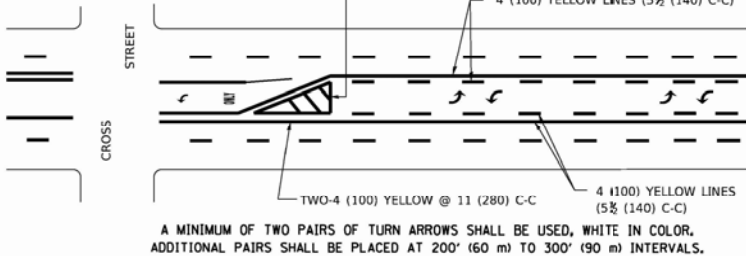
\* MARKINGS SHALL BE INSTALLED PARALLEL TO THE CENTERLINE OF THE ROAD WHICH IT CROSSES



4' (1.2 m) WIDE MEDIANS ONLY

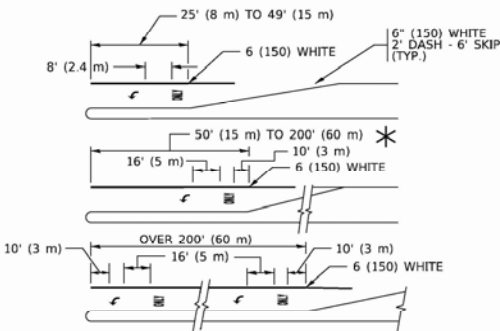


MEDIANS OVER 4' (1.2 m) WIDE



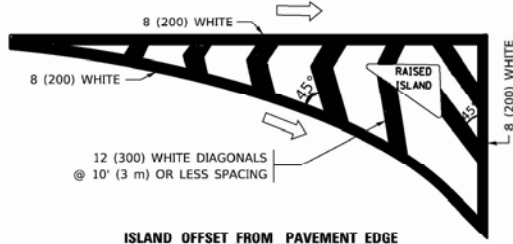
MEDIAN WITH TWO-WAY LEFT TURN LANE

TYPICAL PAINTED MEDIAN MARKING

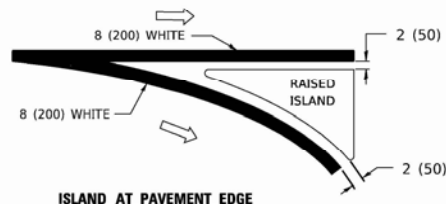


TYPICAL LEFT (OR RIGHT) TURN LANE

TYPICAL TURN LANE MARKING

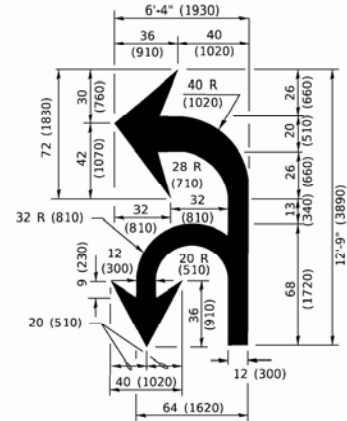


ISLAND OFFSET FROM PAVEMENT EDGE

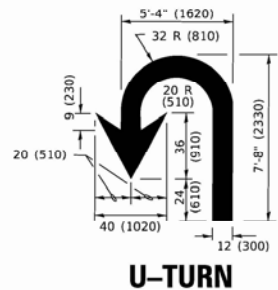


ISLAND AT PAVEMENT EDGE

TYPICAL ISLAND MARKING



COMBINATION LEFT AND U-TURN



U-TURN

LANE REDUCTION TRANSITION

\* LANE REDUCTION ARROWS REQUIRED AT SPEEDS OF 45 MPH OR GREATER OR WHEN SPECIFIED IN PLANS.

TYPE OF MARKING	WIDTH OF LINE	PATTERN	COLOR	SPACING / REMARKS
CENTERLINE ON 2 LANE PAVEMENT	4 (100)	SKIP-DASH	YELLOW	10' (3 m) LINE WITH 30' (9 m) SPACE
CENTERLINE ON MULTI-LANE UNDIVIDED PAVEMENT	2 @ 4 (100)	SOLID	YELLOW	11 (280) C-C
NO PASSING ZONE LINES: FOR ONE DIRECTION FOR BOTH DIRECTIONS	4 (100) 2 @ 4 (100)	SOLID SOLID	YELLOW YELLOW	5 1/2 (140) C-C FROM SKIP-DASH CENTERLINE 11 (280) C-C OMIT SKIP-DASH CENTERLINE BETWEEN
LANE LINES	4 (100) 5 (125) ON FREEWAYS	SKIP-DASH SKIP-DASH	WHITE WHITE	10' (3 m) LINE WITH 30' (9 m) SPACE
DOTTED LINES (EXTENSIONS OF CENTER, LANE OR TURN LANE MARKINGS)	SAME AS LINE BEING EXTENDED	SKIP-DASH	SAME AS LINE BEING EXTENDED	2' (600) LINE WITH 6' (1.8 m) SPACE
EDGE LINES	4 (100)	SOLID	YELLOW-LEFT WHITE-RIGHT	OUTLINE MEDIANS IN YELLOW
TURN LANE MARKINGS	6 (150) LINE; FULL SIZE LETTERS & SYMBOLS (8' (2.4m))	SOLID	WHITE	SEE TYPICAL TURN LANE MARKING DETAIL
TWO WAY LEFT TURN MARKING	2 @ 4 (100) EACH DIRECTION 8' (2.4m) LEFT ARROW	SKIP-DASH AND SOLID IN PAIRS	YELLOW WHITE	10' (3 m) LINE WITH 30' (9 m) SPACE FOR SKIP-DASH; 5 1/2 (140) C-C BETWEEN SOLID LINE AND SKIP-DASH LINE SEE TYPICAL TWO-WAY LEFT TURN MARKING DETAIL
CROSSWALK LINES (PEDESTRIAN) A. DIAGONALS (BIKE & EQUESTRIAN) B. LONGITUDINAL BARS (SCHOOL)	2 @ 6 (150) 12 (300) @ 45° 12 (300) @ 90°	SOLID SOLID SOLID	WHITE WHITE WHITE	NOT LESS THAN 6' (1.8 m) APART 2' (600) APART 2' (600) APART SEE TYPICAL CROSSWALK MARKING DETAILS.
STOP LINES	24 (600)	SOLID	WHITE	PLACE 4' (1.2 m) IN ADVANCE OF AND PARALLEL TO CROSSWALK, IF PRESENT. OTHERWISE, PLACE AT DESIRED STOPPING POINT. PARALLEL TO CROSSROAD CENTERLINE, WHERE POSSIBLE
PAINTED MEDIANS	2 @ 4 (100) WITH 12 (300) DIAGONALS @ 45° NO DIAGONALS USED FOR 4' (1.2 m) WIDE MEDIANS	SOLID	YELLOW: TWO WAY TRAFFIC WHITE: ONE WAY TRAFFIC	11 (280) C-C FOR THE DOUBLE LINE SEE TYPICAL PAINTED MEDIAN MARKING.
GORE MARKING AND CHANNELIZING LINES	8 (200) WITH 12 (300) DIAGONALS @ 45°	SOLID	WHITE	DIAGONALS: 15' (4.5 m) C-C (LESS THAN 30MPH (50 km/h)) 20' (6 m) C-C 30MPH (50 km/h) TO 45MPH (70 km/h)) 30' (9 m) C-C (OVER 45MPH (70 km/h))
RAILROAD CROSSING	24 (600) TRANSVERSE LINES: "RR" 15 6' (1.8 m) LETTERS; 16 (400) LINE FOR "X"	SOLID	WHITE	SEE STATE STANDARD 780001 AREA OF: "R"=3.6 SQ. FT. (0.33 m <sup>2</sup> ) EACH "X"=54.0 SQ. FT. (5.0 m <sup>2</sup> )
SHOULDER DIAGONALS (REQUIRED FOR SHOULDERS ≥ 8')	12 (300) @ 45°	SOLID	WHITE - RIGHT YELLOW - LEFT	50' (15 m) C-C (LESS THAN 30MPH (50 km/h)) 75' (25 m) C-C (30 MPH (50 km/h) TO 45MPH (70 km/h)) 150' (45 m) C-C (OVER 45MPH (70 km/h))
U TURN ARROW	SEE DETAIL	SOLID	WHITE	16.3 SF
2 ARROW COMBINATION LEFT AND U TURN	SEE DETAIL	SOLID	WHITE	30.4 SF

FOR FURTHER DETAILS ON PAVEMENT MARKING REFER TO STANDARD SPECIFICATIONS FOR ROAD AND BRIDGE CONSTRUCTION AND STATE STANDARD 780001.

All dimensions are in inches (millimeters) unless otherwise shown.

MODEL: Default  
FILE NAME: I:\MAIL\084EBD\INTG Illinois.gov\PI\DOT\Documents\DOT Office\District 1\Projects\0454522-2-24\CADD\DATA\CAD\sheet13.dgn

USER NAME = footemj	DESIGNED - EVERS	REVISED - C. JUCIUS 09-09-09
	DRAWN -	REVISED - C. JUCIUS 07-01-13
PLOT SCALE = 50.0000" / in.	CHECKED -	REVISED - C. JUCIUS 12-21-15
PLOT DATE = 3/4/2019	DATE - 03-19-90	REVISED - C. JUCIUS 04-12-16

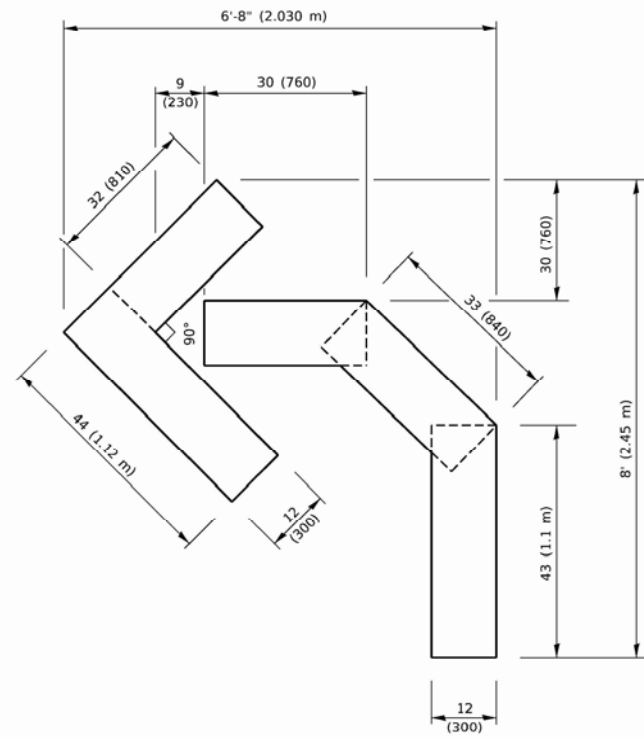
STATE OF ILLINOIS  
DEPARTMENT OF TRANSPORTATION

DISTRICT ONE  
TYPICAL PAVEMENT MARKINGS

SCALE: NONE SHEET 1 OF 2 SHEETS STA. TO STA.

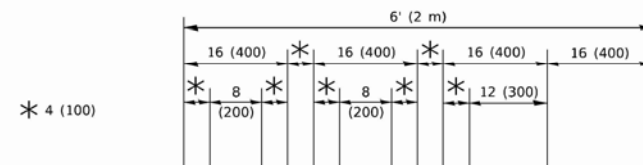
F.A.U. RTE.	SECTION	COUNTY	TOTAL SHEETS	SHEET NO.
0098	24-00022-00-RS	KANE	18	16
TC-13		CONTRACT NO.		
ILLINOIS		FED. AID PROJECT		





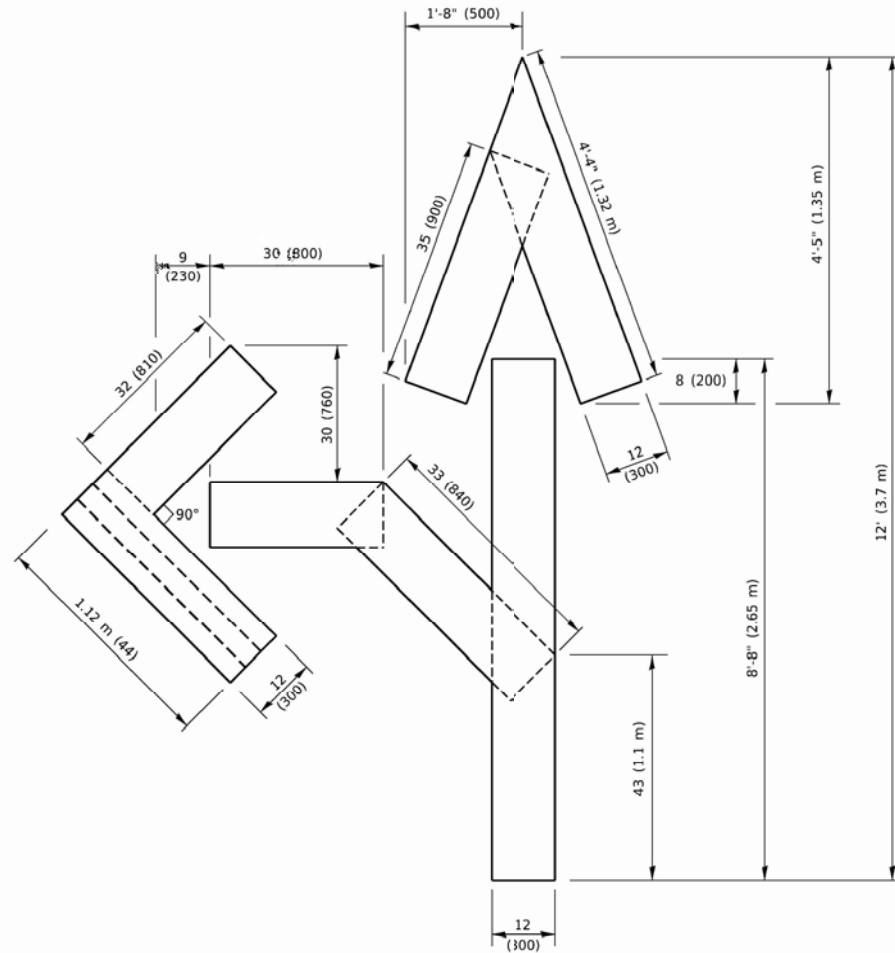
**QUANTITY**

4 (100) LINE = 45.5 ft. (13.9 m)  
15.2 sq. ft. (1.41 sq. m)



**QUANTITY**

4 (100) LINE = 64.1 ft. (19.5 m)  
21.4 sq. ft. (1.99 sq. m)

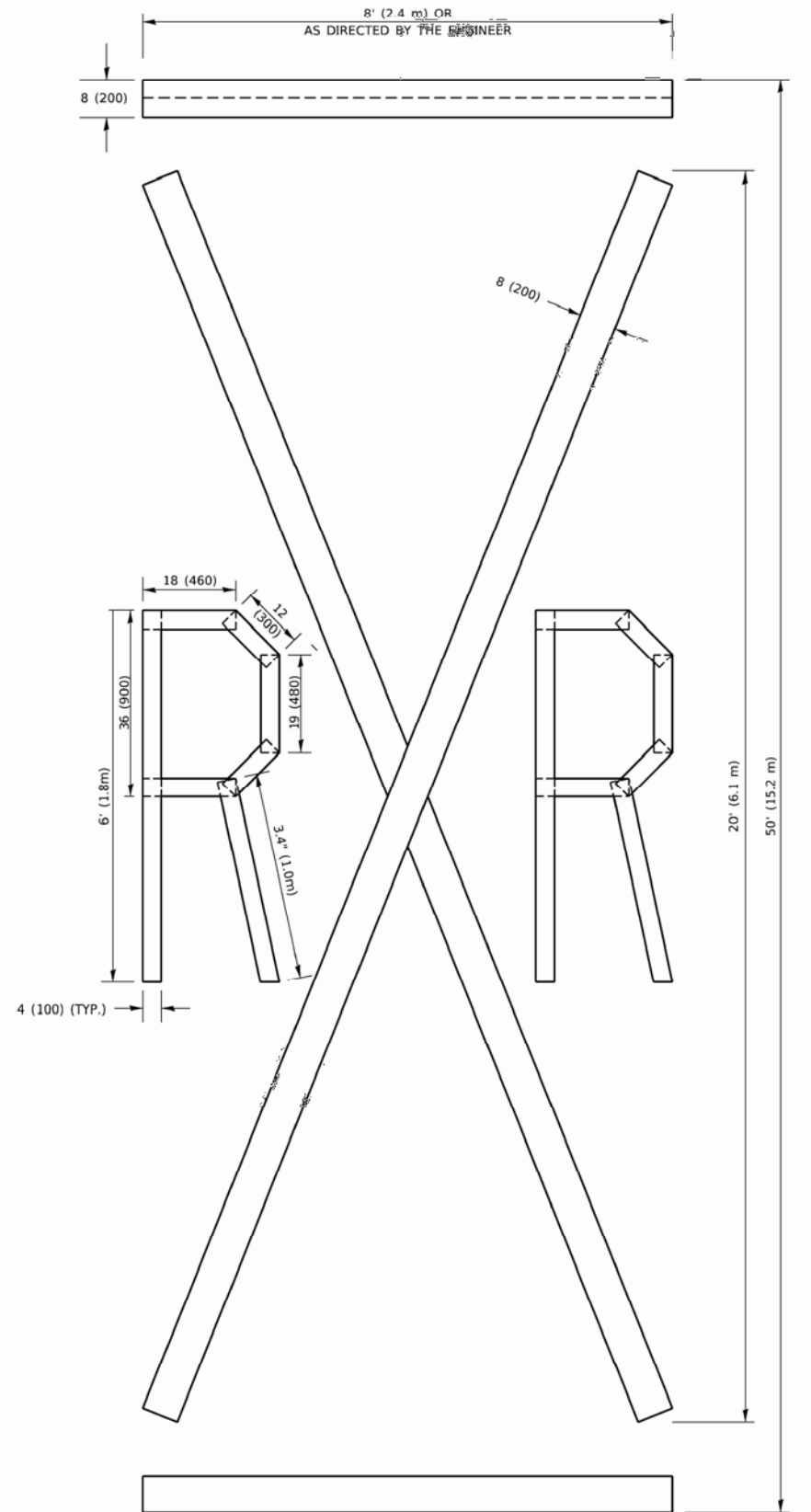


**QUANTITY**

4 (100) LINE = 82.5 ft. (25.1 m)  
27.5 sq. ft. (2.53 sq. m)

**NOTE:**

ALL QUANTITIES OF PLACEMENT ARE REPRESENTED IN LINEAR FEET OF 4" LINES TO MATCH THE 4" TEMPORARY TAPE PAY ITEM AND REPRESENTS THE TOTAL QUANTITY OF 4" TAPE REQUIRED.



**QUANTITY**

4 (100) LINE = 225.9 ft. (68.9 m)  
75.3 sq. ft. (6.99 sq. m)

All dimensions are in inches (millimeters) unless otherwise shown.

MODEL: Default  
FILE NAME: \\P:\110846\BID\NTEG Illinois.gov\PM\DOT\Documents\DOT Office\District 1\Projects\Dist1\SH27234\CADD\Data\CAD\Sheet1c16.dgn

USER NAME = footemj	DESIGNED -	REVISED - T. RAMMACH 03-02-98
	DRAWN -	REVISED - E. GOMEZ 08-28-00
PLOT SCALE = 50.0068" / in.	CHECKED -	REVISED - E. GOMEZ 08-28-00
PLOT DATE = 3/4/2019	DATE - 09-18-94	REVISED - A. SCHUETZE 09-15-16

STATE OF ILLINOIS  
DEPARTMENT OF TRANSPORTATION

SHORT TERM PAVEMENT MARKING LETTERS AND SYMBOLS

SCALE: NONE SHEET 1 OF 1 SHEETS STA. TO STA.

F.A.U. RTE.	SECTION	COUNTY	TOTAL SHEETS	SHEET NO.
0098	24-00022-00-RS	KANE	18	17
TC-16		CONTRACT NO.		
ILLINOIS		FED. AID PROJECT		



MODEL: Default  
FILE NAME: P:\11084\BID\NTEG Illinois.gov\PIV\DOT\Documents\DOT Office\IDistrict 1\Projects\ID45822\24\CADD\Data\CAD\Sheet1c22.dgn

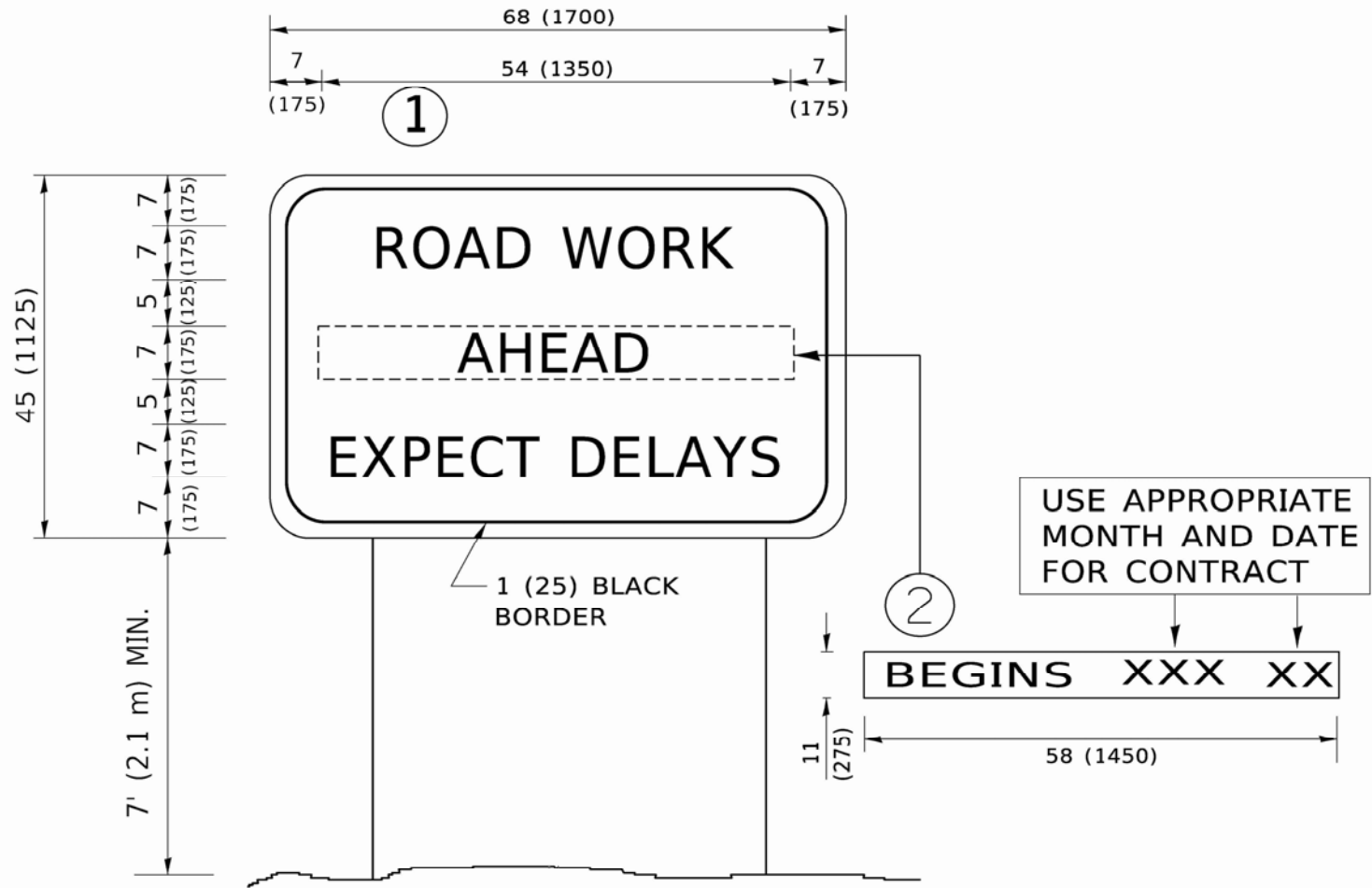
	USER NAME	= footemj	DESIGNED	-		REVISED	-	R. MIRS 09-15-97
			DRAWN	-		REVISED	-	R. MIRS 12-11-97
	PLOT SCALE	= 50.0000 ' / in.	CHECKED	-		REVISED	-	T. RAMMACHER 02-02-99
	PLOT DATE	= 3/4/2019	DATE	-		REVISED	-	C. JUCIUS 01-31-07

STATE OF ILLINOIS  
DEPARTMENT OF TRANSPORTATION

ARTERIAL ROAD  
INFORMATION SIGN

SCALE: NONE    SHEET 1    OF 1    SHEETS    STA.    TO STA.

F.A.U. RTE.	SECTION	COUNTY	TOTAL SHEETS	SHEET NO.
0098	24-00022-00-RS	KANE	18	18
TC-22		CONTRACT NO.		
ILLINOIS		FED. AID PROJECT		



NOTES:

1. USE BLACK LETTERING ON ORANGE BACKGROUND.
2. ERECT SIGNS IN ADVANCE OF THE LOCATION FOR THE "ROAD CONSTRUCTION AHEAD" SIGN AT LOCATIONS AS DIRECTED BY THE ENGINEER.
3. ERECT SIGN ① WITH INSTALLED PANEL ② ONE WEEK PRIOR TO THE START OF CONSTRUCTION.
4. REMOVE PANEL ② SOON AFTER THE START OF CONSTRUCTION.
5. SEE SPECIAL PROVISION FOR "TEMPORARY INFORMATION SIGNING" FOR ADDITIONAL INFORMATION.
6. ONE SIGN ASSEMBLY EQUALS 25.70 SQ. FT. (2.3 SQ. M.)
7. SHALL BE PAID FOR AS TEMPORARY INFORMATION SIGNING.

ALL DIMENSIONS ARE IN INCHES (MILLIMETERS)  
UNLESS OTHERWISE SHOWN.